

CUL5 RABBIT PAB

Cat.#: S216452

Product Name: Anti-CUL5 Rabbit Polyclonal Antibody

Synonyms: CUL-5; VACM1; VACM-1

UNIPROT ID: Q93034 (Gene Accession - BC063306)

Background: Enables ubiquitin protein ligase binding activity. Predicted to be involved in SCF-dependent proteasomal ubiquitin-dependent protein catabolic process and protein ubiquitination. Predicted to act upstream of or within cerebral cortex radially oriented cell migration and radial glia guided migration of Purkinje cell. Located in site of DNA damage. Part of Cul5-RING ubiquitin ligase complex.

Immunogen: Fusion protein of human CUL5

Applications: ELISA, IHC

Recommended Dilutions: IHC: 50-200; ELISA: 5000-10000

Host Species: Rabbit

Clonality: Rabbit Polyclonal

Isotype: Immunogen-specific rabbit IgG

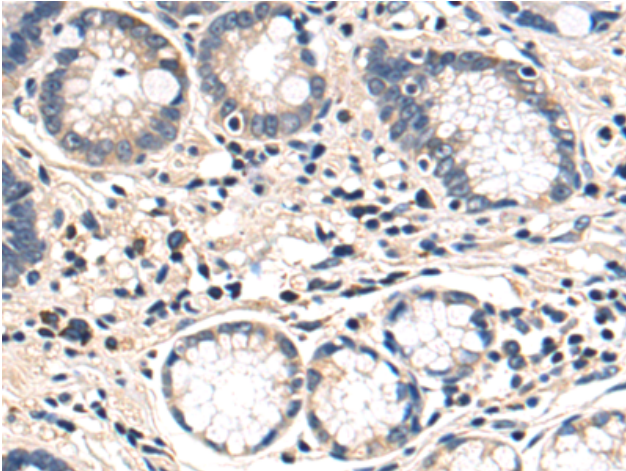
Purification: Antigen affinity purification

Species Reactivity: Human, Mouse, Rat

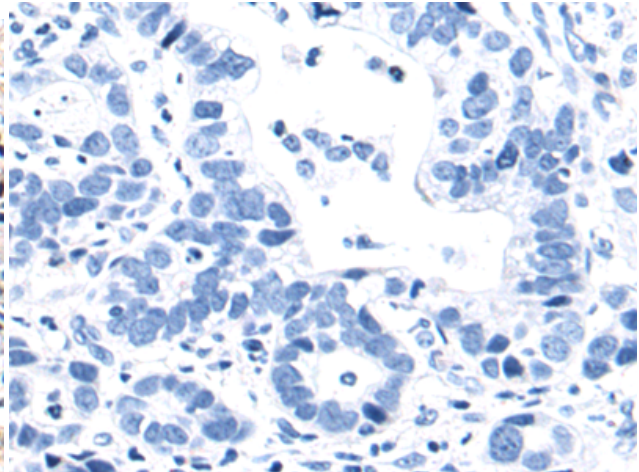
Constituents: PBS (without Mg²⁺ and Ca²⁺), pH 7.4, 150 mM NaCl, 0.05% Sodium Azide and 40% glycerol

Research Areas: Cell Biology

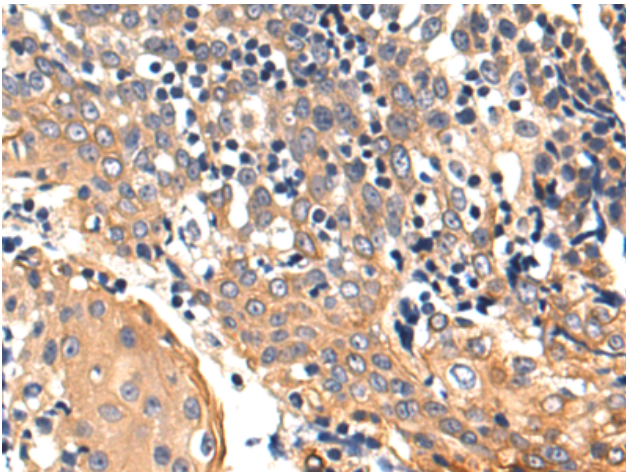
Storage & Shipping: Store at -20°C. Avoid repeated freezing and thawing



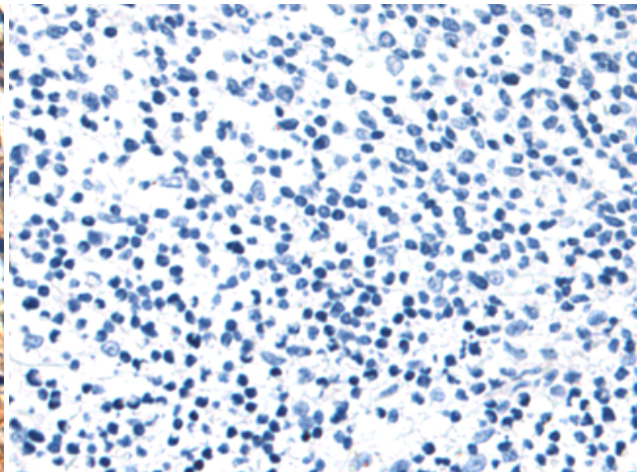
Immunohistochemistry analysis of paraffin embedded Human gastric cancer tissue using 216452 (CUL5 Antibody) at a dilution of 1/80 (Cytoplasm).



In comparison with the IHC on the left, the same paraffin-embedded Human gastric cancer tissue is first treated with the fusion protein and then with 216452 (Anti-CUL5 Antibody) at dilution 1/80.



The image on the left is immunohistochemistry of paraffin-embedded Human tonsil tissue using 216452 (Anti-CUL5 Antibody) at a dilution of 1/80.



In comparison with the IHC on the left, the same paraffin-embedded Human tonsil tissue is first treated with fusion protein and then with D220491 (Anti-CUL5 Antibody) at dilution 1/80.