

## CUG BP1 RABBIT MAB

**Cat.#:** N263287

**Product Name:** Anti-CUG BP1 Rabbit Monoclonal Antibody

**Synonyms:** CELF1; BRUNOL2; CUGBP; CUGBP1; NAB50; CUGBP Elav-like family member 1; CELF-1; 50 kDa nuclear polyadenylated RNA-binding protein; Bruno-like protein 2; CUG triplet repeat RNA-binding protein 1; CUG-BP1; CUG-BP- and ETR-3-like factor 1; Dead

**UNIPROT ID:** Q92879

**Background:** RNA-binding protein implicated in the regulation of several post-transcriptional events. Involved in pre-mRNA alternative splicing, mRNA translation and stability. Mediates exon inclusion and/or exclusion in pre-mRNA that are subject to tissue-specific and developmentally regulated alternative splicing.

**Immunogen:** A synthetic peptide of human CUG-BP1

**Applications:** WB,IHC-F,IHC-P,ICC/IF,IP

**Recommended Dilutions:** WB: 1/500-1/1000 IHC: 1/50-1/100 IF: 1/50-1/200 IP: 1/20

**Host Species:** Rabbit

**Clonality:** Rabbit Monoclonal

**Clone ID:** R03-0G7

**MW:** Calculated MW: 52 kDa; Observed MW: 52 kDa

**Isotype:** IgG

**Purification:** Affinity Purified

**Species Reactivity:** Human,Rat

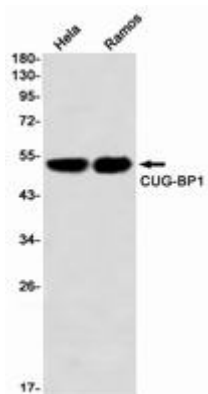
**Conjugation:** Unconjugated

**Modification:** Unmodified

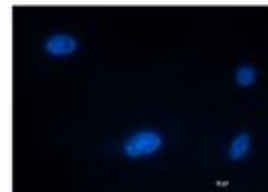
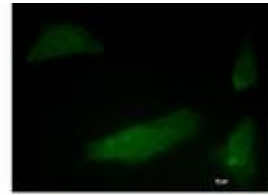
**Constituents:** PBS (without Mg<sup>2+</sup> and Ca<sup>2+</sup>), pH 7.3 containing 50% glycerol, 0.5% BSA and 0.02% sodium azide

**Research Areas:** -

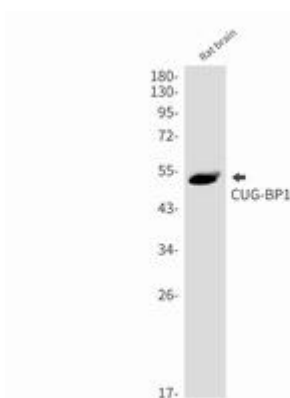
**Storage & Shipping:** Store at -20°C. Avoid repeated freezing and thawing



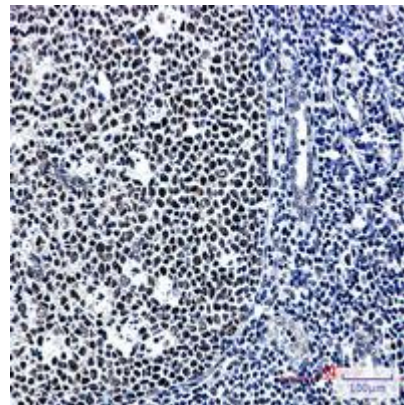
Western blot analysis of CUGBP1 in HeLa, Ramos lysates using CUGBP1 antibody



Immunocytochemistry analysis of CUGBP1 (green) in HT-1080 using CUGBP1 antibody, and DAPI (blue).



Western blot analysis of CUGBP1 in rat brain lysates using CUGBP1 antibody.



Immunohistochemistry analysis of paraffin-embedded Human tonsil using CUGBP1 antibody. High-pressure and temperature Sodium Citrate pH 6.0 was used for antigen retrieval.