

CTSZ RABBIT PAB

Cat.#: S216400

Product Name: Anti-CTSZ Rabbit Polyclonal Antibody

Synonyms: CTSX

UNIPROT ID: Q9UBR2 (Gene Accession - BC042168)

Background: The protein encoded by this gene is a lysosomal cysteine proteinase and member of the peptidase C1 family. It exhibits both carboxy-monopeptidase and carboxy-dipeptidase activities. The encoded protein has also been known as cathepsin X and cathepsin P. This gene is expressed ubiquitously in cancer cell lines and primary tumors and, like other members of this family, may be involved in tumorigenesis.

Immunogen: Fusion protein of human CTSZ

Applications: ELISA, WB, IHC

Recommended Dilutions: IHC: 100-300;WB: 500-2000;ELISA: 5000-10000

Host Species: Rabbit

Clonality: Rabbit Polyclonal

Isotype: Immunogen-specific rabbit IgG

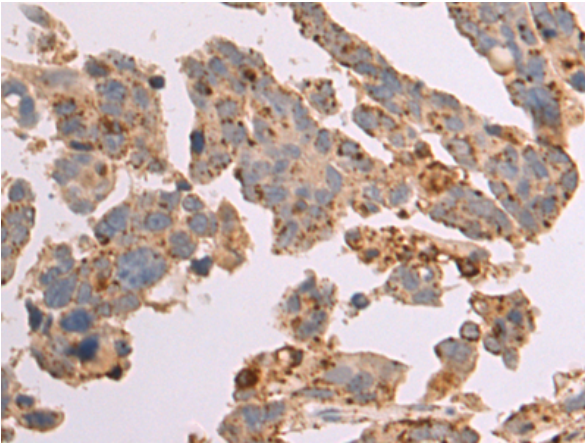
Purification: Antigen affinity purification

Species Reactivity: Human, Mouse, Rat

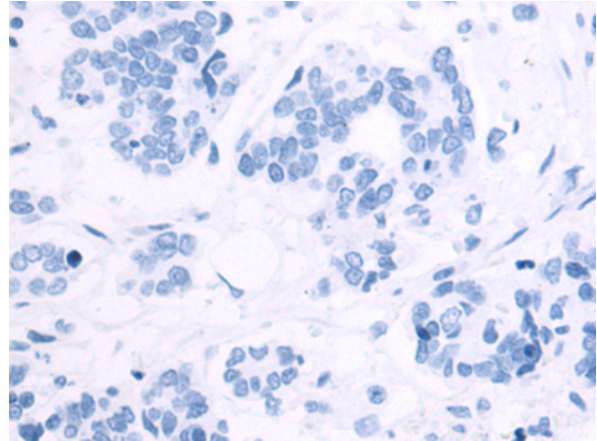
Constituents: PBS (without Mg²⁺ and Ca²⁺), pH 7.4, 150 mM NaCl, 0.05% Sodium Azide and 40% glycerol

Research Areas: Cell Biology

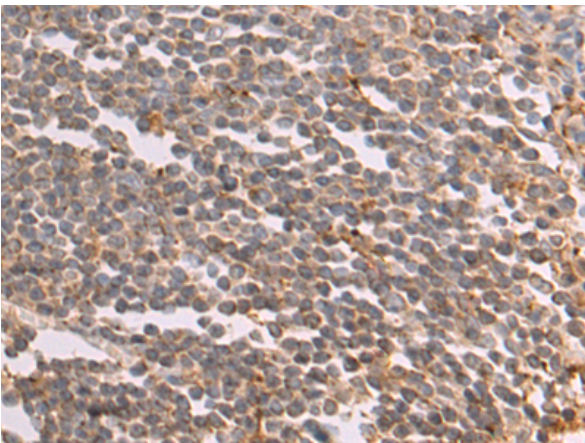
Storage & Shipping: Store at -20°C. Avoid repeated freezing and thawing



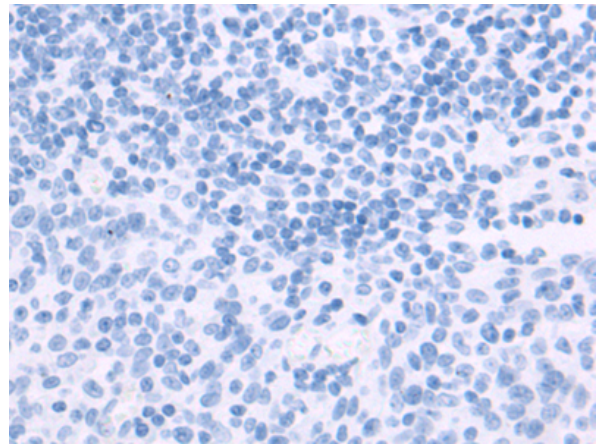
Immunohistochemistry analysis of paraffin embedded Human colorectal cancer tissue using 216400(CTSZ Antibody) at a dilution of 1/90(Cytoplasm).



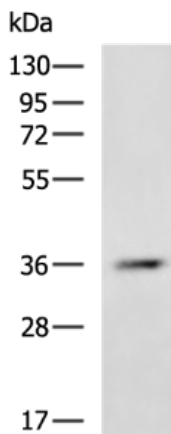
In comparison with the IHC on the left, the same paraffin-embedded Human colorectal cancer tissue is first treated with the fusion protein and then with 216400(Anti-CTSZ Antibody) at dilution 1/90.



The image on the left is immunohistochemistry of paraffin-embedded Human tonsil tissue using 216400(Anti-CTSZ Antibody) at a dilution of 1/90.



In comparison with the IHC on the left, the same paraffin-embedded Human tonsil tissue is first treated with fusion protein and then with D220362(Anti-CTSZ Antibody) at dilution 1/90.



Gel: 8%SDS-PAGE, Lysate: 40 µg;
Lane: Human liver tissue lysate;
Primary antibody: 216400(CTSZ Antibody) at dilution 1/700;
Secondary antibody: HRP-conjugated Goat anti rabbit IgG at 1/5000 dilution;
Exposure time: 30 seconds



Product Description

Pioneering GTPase and Oncogene Product Development since 2010
