

CTRB1 RABBIT PAB

Cat.#: S218853

Product Name: Anti-CTRB1 Rabbit Polyclonal Antibody

Synonyms: CTRB

UNIPROT ID: P17538 (Gene Accession - BC005385)

Background: This gene encodes a member of the serine protease family of enzymes and forms a principal precursor of the pancreatic proteolytic enzymes. The encoded preproprotein is synthesized in the acinar cells of the pancreas and secreted into the small intestine where it undergoes proteolytic activation to generate a functional enzyme. This gene is located adjacent to a related chymotrypsinogen gene. This gene encodes distinct isoforms, some or all of which may undergo similar processing to generate the mature protein.

Immunogen: Fusion protein of human CTRB1

Applications: ELISA, WB, IHC

Recommended Dilutions: IHC: 40-200;WB: 1000-5000;ELISA: 5000-10000

Host Species: Rabbit

Clonality: Rabbit Polyclonal

Isotype: Immunogen-specific rabbit IgG

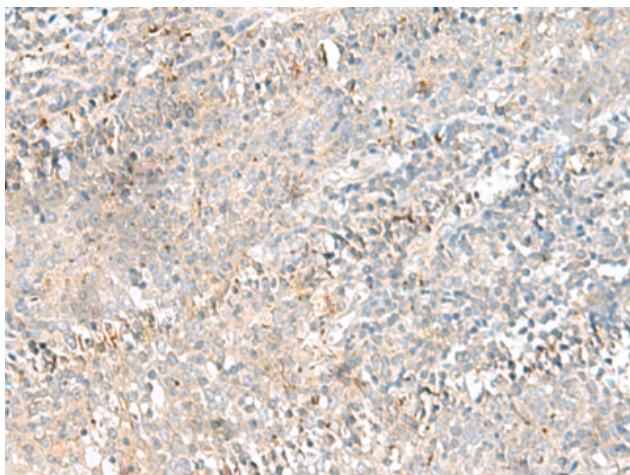
Purification: Antigen affinity purification

Species Reactivity: Human, Mouse, Rat

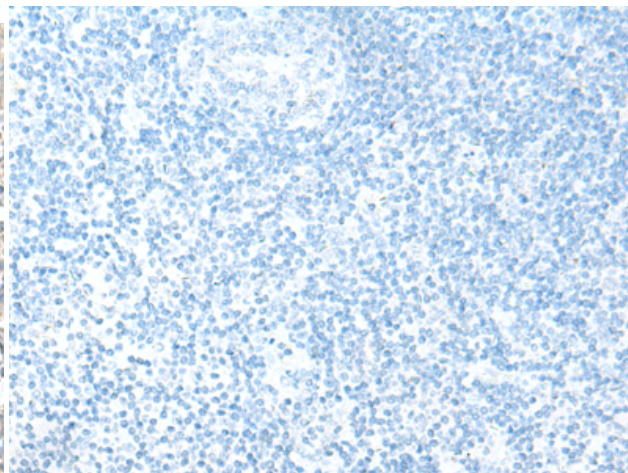
Constituents: PBS (without Mg²⁺ and Ca²⁺), pH 7.4, 150 mM NaCl, 0.05% Sodium Azide and 40% glycerol

Research Areas: Cell Biology

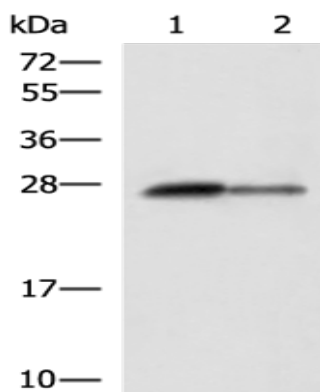
Storage & Shipping: Store at -20°C. Avoid repeated freezing and thawing



Immunohistochemistry analysis of paraffin embedded Human tonsil tissue using 218853(CTRBI Antibody) at a dilution of 1/55(Secreted).



In comparison with the IHC on the left, the same paraffin-embedded Human tonsil tissue is first treated with the fusion protein and then with 218853(Anti-CTRBI Antibody) at dilution 1/55.



Gel: 12%SDS-PAGE, Lysate: 40 µg;
 Lane 1-2: Rat pancreas tissue and Mouse pancreas tissue lysates;
 Primary antibody: 218853(CTRBI Antibody) at dilution 1/1000;
 Secondary antibody: HRP-conjugated Goat anti rabbit IgG at 1/5000 dilution;
 Exposure time: 3 seconds