

CTR9? RABBIT PAB

Cat.#: S215259

Product Name: Anti-CTR9Rabbit Polyclonal Antibody

Synonyms: TSBP; p150; SH2BPI; p150TSP

UNIPROT ID: Q6PD62 (Gene Accession - NP_055448)

Background: CTR9, parafibromin (CDC73; MIM 607393), LEO1 (MIM 610507), and PAF1 (MIM 610506) form the PAF protein complex which associates with the RNA polymerase II subunit POLR2A (MIM 180660) and with a histone methyltransferase complex (Rozenblatt-Rosen et al., 2005 [PubMed 15632063]).

Immunogen: Synthetic peptide of human CTR9

Applications: ELISA, IHC

Recommended Dilutions: IHC: 20-100; ELISA: 500-1000

Host Species: Rabbit

Clonality: Rabbit Polyclonal

Isotype: Immunogen-specific rabbit IgG

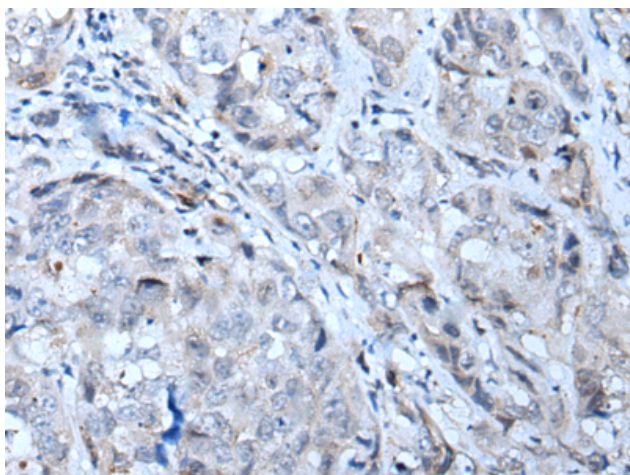
Purification: Antigen affinity purification

Species Reactivity: Human, Mouse

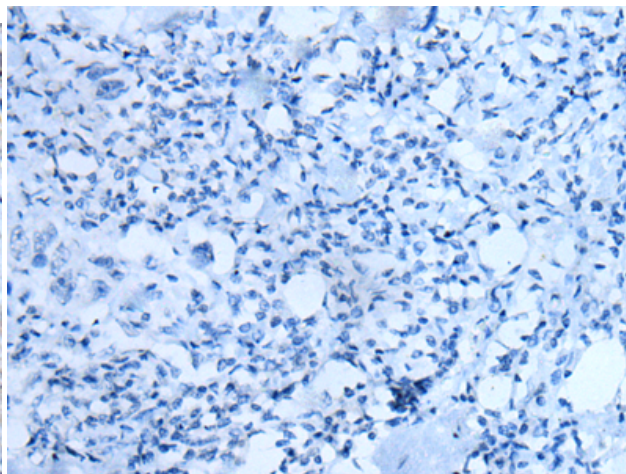
Constituents: PBS (without Mg²⁺ and Ca²⁺), pH 7.4, 150 mM NaCl, 0.05% Sodium Azide and 40% glycerol

Research Areas: Epigenetics and Nuclear Signaling

Storage & Shipping: Store at -20°C. Avoid repeated freezing and thawing



Immunohistochemistry analysis of paraffin embedded Human breast cancer tissue using 215259(CTR9Antibody) at a dilution of 1/20(Nucleus).



In comparison with the IHC on the left, the same paraffin-embedded Human breast cancer tissue is first treated with the synthetic peptide and then with 215259(Anti-CTR9Antibody) at dilution 1/20.