

## CTNNB1 RABBIT PAB

**Cat.#:** S217314

**Product Name:** Anti-CTNNB1 Rabbit Polyclonal Antibody

**Synonyms:** NAP; P14L; PP8304; C20orf33; dJ633O20.1

**UNIPROT ID:** Q8WYA6 (Gene Accession - BC036739)

**Background:** The protein encoded by this gene is a component of the pre-mRNA-processing factor 19-cell division cycle 5-like (PRP19-CDC5L) protein complex, which activates pre-mRNA splicing and is an integral part of the spliceosome. The encoded protein is also a nuclear localization sequence binding protein, and binds to activation-induced deaminase and is important for antibody diversification. This gene may also be associated with the development of obesity.

**Immunogen:** Fusion protein of human CTNNB1

**Applications:** ELISA, WB, IHC

**Recommended Dilutions:** IHC: 100-300;WB: 200-1000;ELISA: 5000-10000

**Host Species:** Rabbit

**Clonality:** Rabbit Polyclonal

**Isotype:** Immunogen-specific rabbit IgG

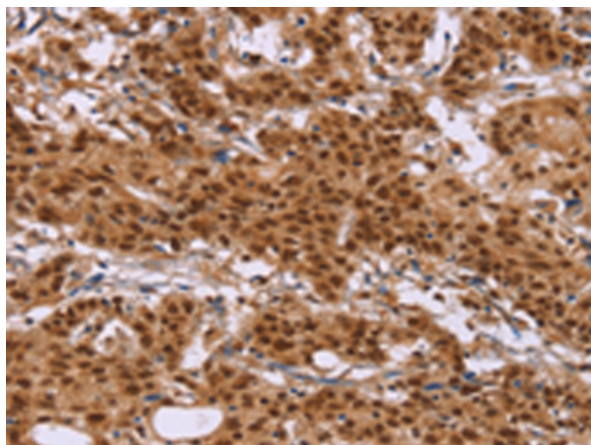
**Purification:** Antigen affinity purification

**Species Reactivity:** Human, Mouse, Rat

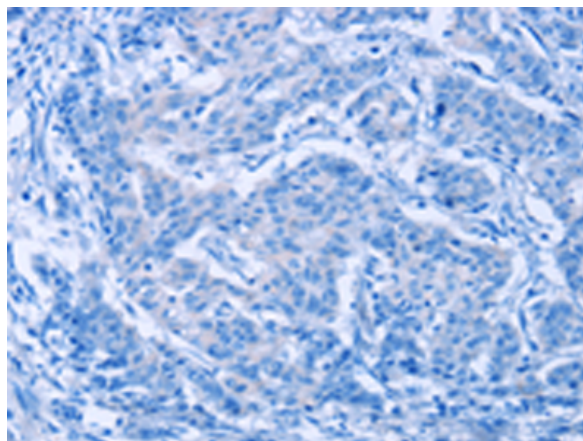
**Constituents:** PBS (without Mg<sup>2+</sup> and Ca<sup>2+</sup>), pH 7.4, 150 mM NaCl, 0.05% Sodium Azide and 40% glycerol

**Research Areas:** Cancer, Cell Biology

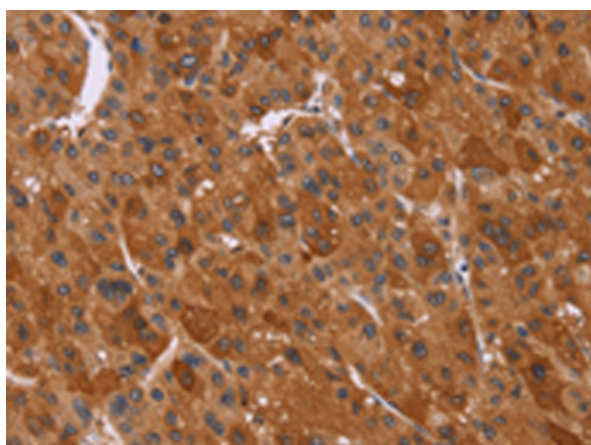
**Storage & Shipping:** Store at -20°C. Avoid repeated freezing and thawing



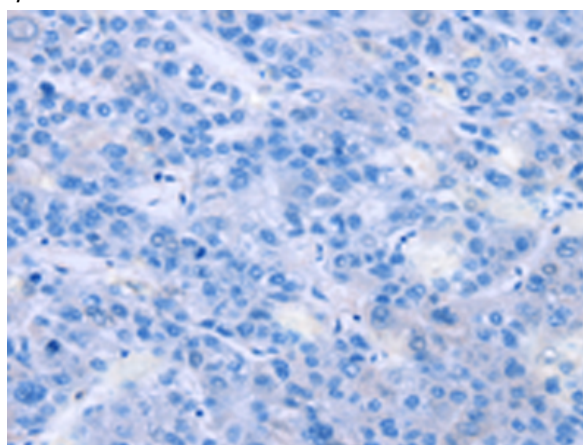
Immunohistochemistry analysis of paraffin embedded Human gastric cancer tissue using 217314(CTNNB1 Antibody) at a dilution of 1/50(nucleus and cytoplasm).



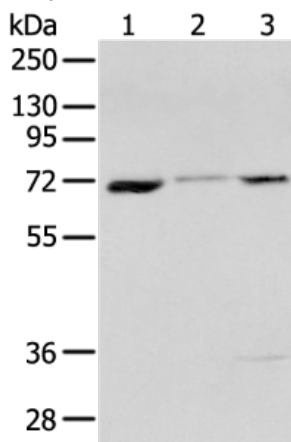
In comparison with the IHC on the left, the same paraffin-embedded Human gastric cancer tissue is first treated with the fusion protein and then with 217314(Anti-CTNNB1 Antibody) at dilution 1/50.



The image on the left is immunohistochemistry of paraffin-embedded Human liver cancer tissue using 217314(Anti-CTNNB1 Antibody) at a dilution of 1/50.



In comparison with the IHC on the left, the same paraffin-embedded Human liver cancer tissue is first treated with fusion protein and then with D222165(Anti-CTNNB1 Antibody) at dilution 1/50.



Gel: 8%SDS-PAGE, Lysate: 40 µg;  
Lane 1-3: Hepg2, A431 and SKOV3 cell;  
Primary antibody: 217314(CTNNB1 Antibody) at dilution 1/200;  
Secondary antibody: Goat anti rabbit IgG at 1/8000 dilution;  
Exposure time: 5 seconds



# Product Description

Pioneering GTPase and Oncogene Product Development since 2010

---