

CTNNA1 RABBIT MAB

Cat.#: N261824

Product Name: Anti-CTNNA1 Rabbit Monoclonal Antibody

Synonyms: Catenin alpha-1; Alpha E-catenin; Cadherin-associated protein; Renal carcinoma antigen NY-REN-13

UNIPROT ID: P35221

Background: Adherens junctions are dynamic structures that form cell-cell contacts and are important in development, differentiation, tissue integrity, morphology and cell polarity. They are composed of the transmembrane proteins, cadherins, which bind cadherins on adjacent cells in a calcium-dependent manner.

Immunogen: A synthetic peptide of human alpha 1 Catenin

Applications: WB,IP

Recommended Dilutions: WB: 1/500-1/1000 IP: 1/20

Host Species: Rabbit

Clonality: Rabbit Monoclonal

Clone ID: R07-7D5

MW: Calculated MW: 100 kDa; Observed MW: 100 kDa

Isotype: IgG

Purification: Affinity Purified

Species Reactivity: Human,Mouse,Rat

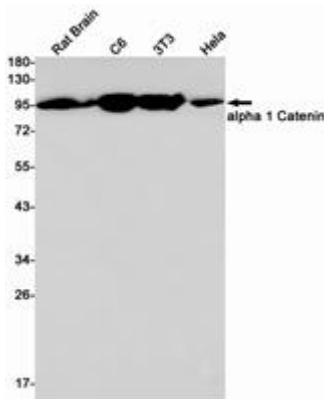
Conjugation: Unconjugated

Modification: Unmodified

Constituents: PBS (without Mg²⁺ and Ca²⁺), pH 7.3 containing 50% glycerol, 0.5% BSA and 0.02% sodium azide

Research Areas: Cell Biology

Storage & Shipping: Store at -20°C. Avoid repeated freezing and thawing



Western blot analysis of alpha 1 Catenin in rat Brain, C6, 3T3, HeLa lysates using CTNNA1 antibody.