

## CTGF RABBIT MAB

**Cat.#:** N262074

**Product Name:** Anti-CTGF Rabbit Monoclonal Antibody

**Synonyms:** CCN2; NOV2; HCS24; IGFBP8

**UNIPROT ID:** P29279

**Background:** Major connective tissue mitogen secreted by vascular endothelial cells. Promotes proliferation and differentiation of chondrocytes. Mediates heparin- and divalent cation-dependent cell adhesion in many cell types including fibroblasts, myofibroblasts, endothelial and epithelial cells. Enhances fibroblast growth factor-induced DNA synthesis.

**Immunogen:** Recombinant protein of human CTGF

**Applications:** WB,IP

**Recommended Dilutions:** WB: 1/500-1/1000 IP: 1/20

**Host Species:** Rabbit

**Clonality:** Rabbit Monoclonal

**Clone ID:** R08-8C2

**MW:** Calculated MW: 38 kDa; Observed MW: 35 kDa

**Isotype:** IgG

**Purification:** Affinity Purified

**Species Reactivity:** Human,Rat

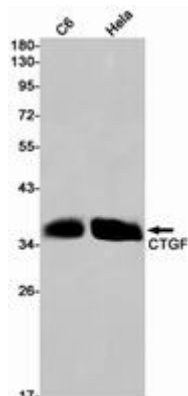
**Conjugation:** Unconjugated

**Modification:** Unmodified

**Constituents:** PBS (without Mg<sup>2+</sup> and Ca<sup>2+</sup>), pH 7.3 containing 50% glycerol, 0.5% BSA and 0.02% sodium azide

**Research Areas:** Cardiovascular

**Storage & Shipping:** Store at -20°C. Avoid repeated freezing and thawing



Western blot analysis of CTGF in C6, HeLa lysates using CTGF antibody.



# Product Description

Pioneering GTPase and Oncogene Product Development since 2010

---