

CTCF RABBIT MAB

Cat.#: N262073

Product Name: Anti-CTCF Rabbit Monoclonal Antibody

Synonyms: CTCF; Transcriptional repressor CTCF; 11-zinc finger protein; CCCTC-binding factor; CTCFL paralog

UNIPROT ID: P49711

Background: Plays an important role in chromatin remodeling. Can dimerize when it is bound to different DNA sequences, mediating long-range chromatin looping. Mediates interchromosomal association between IGF2/H19 and WS1/NF1 and may direct distant DNA segments to a common transcription factory.

Immunogen: A synthetic peptide of human CTCF

Applications: WB,IHC-F,IHC-P,ICC/IF

Recommended Dilutions: WB: 1/500-1/1000 IHC: 1/50-1/100 IF: 1/50-1/200

Host Species: Rabbit

Clonality: Rabbit Monoclonal

Clone ID: R02-3J9

MW: Calculated MW: 83 kDa; Observed MW: 140 kDa

Isotype: IgG

Purification: Affinity Purified

Species Reactivity: Human,Mouse,Rat

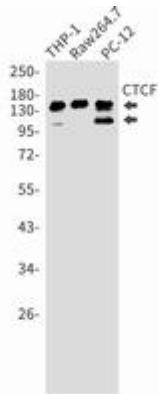
Conjugation: Unconjugated

Modification: Unmodified

Constituents: PBS (without Mg²⁺ and Ca²⁺), pH 7.3 containing 50% glycerol, 0.5% BSA and 0.02% sodium azide

Research Areas: Epigenetics and Nuclear Signaling

Storage & Shipping: Store at -20°C. Avoid repeated freezing and thawing



Western blot analysis of CTCF in THP-1, Raw264.7, PC-12 lysates using CTCF antibody.