

CSNK2B RABBIT PAB

Cat.#: S219698

Product Name: Anti-CSNK2B Rabbit Polyclonal Antibody

Synonyms: G5A, CK2B, CK2N, CSK2B

UNIPROT ID: P67870 (Gene Accession - NP_001311.3.)

Background: This gene encodes the beta subunit of casein kinase II, a ubiquitous protein kinase which regulates metabolic pathways, signal transduction, transcription, translation, and replication. The enzyme is composed of three subunits, alpha, alpha prime and beta, which form a tetrameric holoenzyme. The alpha and alpha prime subunits are catalytic, while the beta subunit serves regulatory functions. The enzyme localizes to the endoplasmic reticulum and the Golgi apparatus.

Immunogen: Synthetic peptide of human CSNK2B

Applications: ELISA, IHC

Recommended Dilutions: IHC: 50-200; ELISA: 1000-5000

Host Species: Rabbit

Clonality: Rabbit Polyclonal

Isotype: Immunogen-specific rabbit IgG

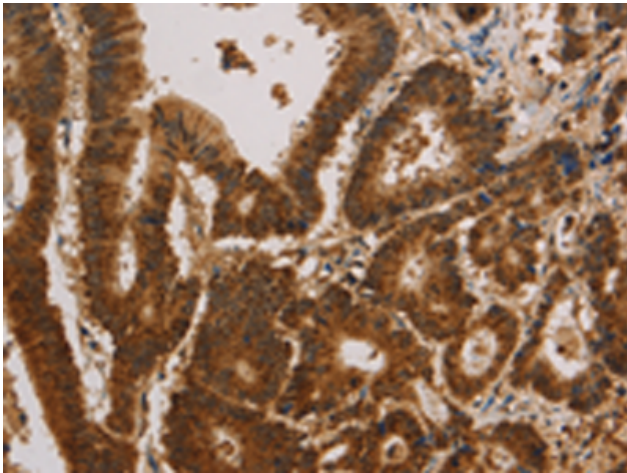
Purification: Antigen affinity purification

Species Reactivity: Human, Mouse, Rat

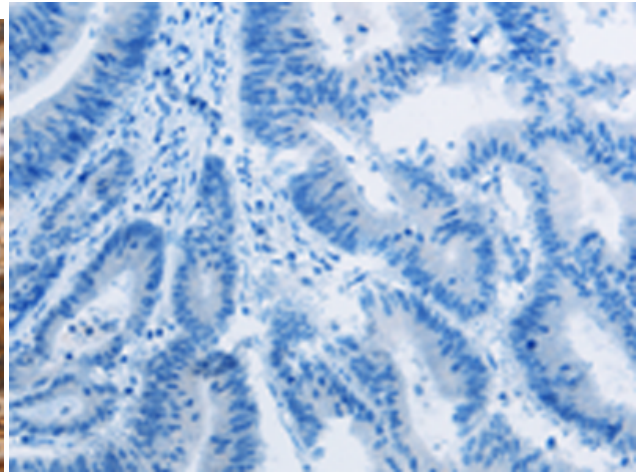
Constituents: PBS (without Mg²⁺ and Ca²⁺), pH 7.4, 150 mM NaCl, 0.05% Sodium Azide and 40% glycerol

Research Areas: Cancer, Signal Transduction

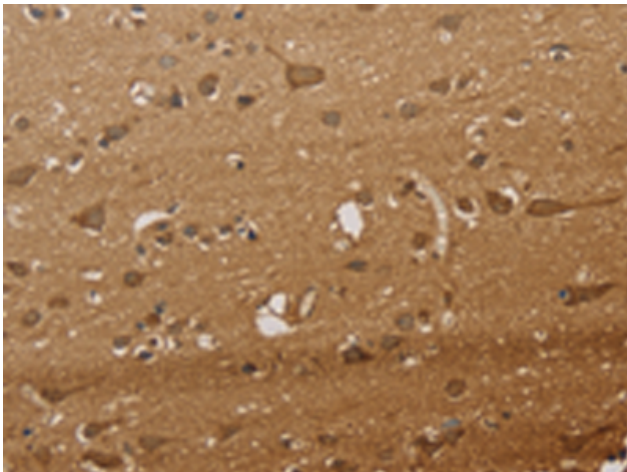
Storage & Shipping: Store at -20°C. Avoid repeated freezing and thawing



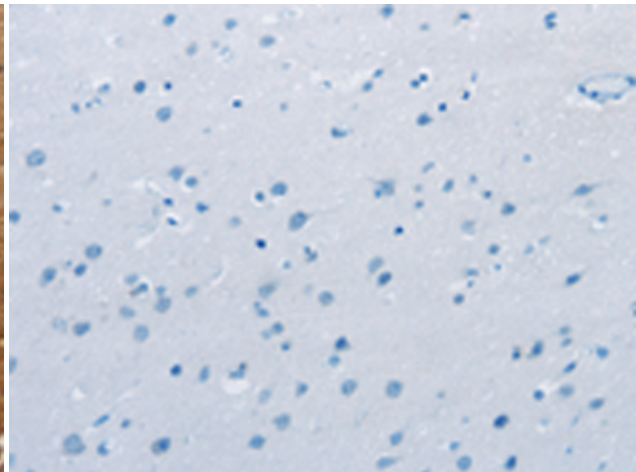
Immunohistochemistry analysis of paraffin embedded Human colon cancer tissue using 219698(CSNK2B Antibody) at a dilution of 1/30(Cytoplasm and Nucleus).



In comparison with the IHC on the left, the same paraffin-embedded Human colon cancer tissue is first treated with the synthetic peptide and then with 219698(Anti-CSNK2B Antibody) at dilution 1/30.



The image on the left is immunohistochemistry of paraffin-embedded Human brain tissue using 219698(Anti-CSNK2B Antibody) at a dilution of 1/30.



In comparison with the IHC on the left, the same paraffin-embedded Human brain tissue is first treated with synthetic peptide and then with D260175(Anti-CSNK2B Antibody) at dilution 1/30.