

CSNK2A2 RABBIT PAB

Cat.#: S218504

Product Name: Anti-CSNK2A2 Rabbit Polyclonal Antibody

Synonyms: CK2A2; CSNK2A1; CK2alpha'

UNIPROT ID: P19784 (Gene Accession - BC008812)

Background: This gene encodes the alpha', or alpha 2, catalytic subunit of the protein kinase enzyme, casein kinase 2 (CK2). Casein kinase 2 is a serine/threonine protein kinase that phosphorylates acidic proteins such as casein. It is involved in various cellular processes, including cell cycle control, apoptosis, and circadian rhythms. This heterotetrameric kinase includes two catalytic subunits, either alpha or alpha', and two regulatory beta subunits. The closely related gene paralog encoding the alpha, or alpha 1 subunit (CSNK2A1, Gene ID: 1457) is found on chromosome 20. An intronic variant in this gene (alpha 2) may be associated with leukocyte telomere length in a South Asian population. A related transcribed pseudogene is found on chromosome 11.

Immunogen: Fusion protein of human CSNK2A2

Applications: ELISA, WB, IHC

Recommended Dilutions: IHC: 100-300;WB: 500-2000;ELISA: 5000-10000

Host Species: Rabbit

Clonality: Rabbit Polyclonal

Isotype: Immunogen-specific rabbit IgG

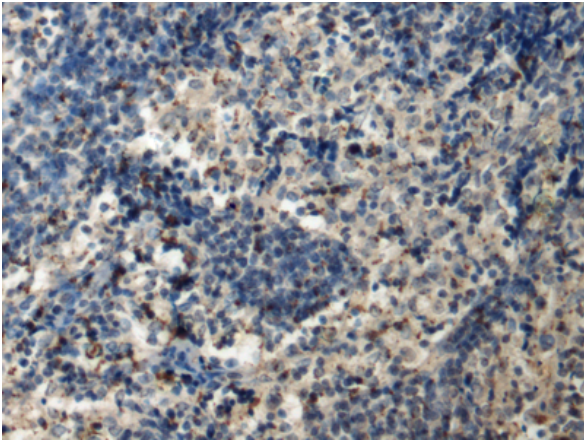
Purification: Antigen affinity purification

Species Reactivity: Human, Mouse

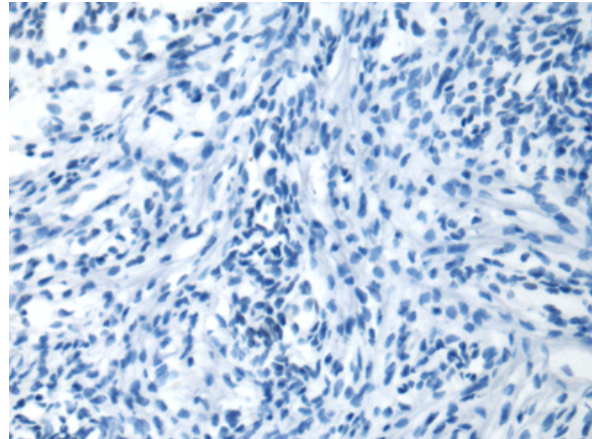
Constituents: PBS (without Mg²⁺ and Ca²⁺), pH 7.4, 150 mM NaCl, 0.05% Sodium Azide and 40% glycerol

Research Areas: Signal Transduction

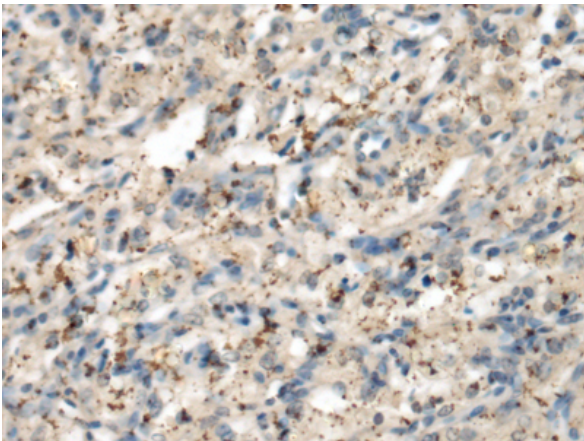
Storage & Shipping: Store at -20°C. Avoid repeated freezing and thawing



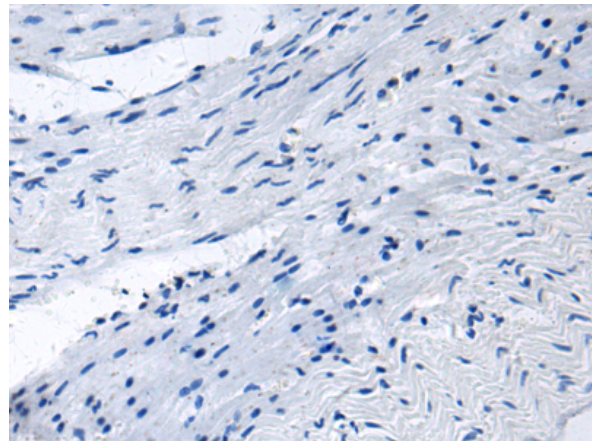
Immunohistochemistry analysis of paraffin embedded Human esophagus cancer tissue using 218504 (CSNK2A2 Antibody) at a dilution of 1/150 (Cytoplasm).



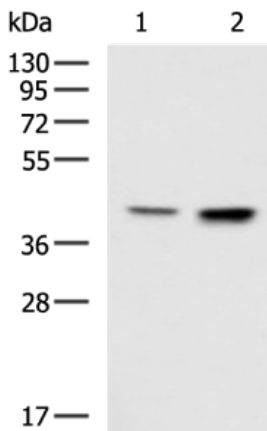
In comparison with the IHC on the left, the same paraffin-embedded Human esophagus cancer tissue is first treated with the fusion protein and then with 218504 (Anti-CSNK2A2 Antibody) at dilution 1/150.



The image on the left is immunohistochemistry of paraffin-embedded Human brain tissue using 218504 (Anti-CSNK2A2 Antibody) at a dilution of 1/150.



In comparison with the IHC on the left, the same paraffin-embedded Human brain tissue is first treated with fusion protein and then with D224570 (Anti-CSNK2A2 Antibody) at dilution 1/150.



Gel: 8% SDS-PAGE, Lysate: 40 µg;
 Lane 1-2: K562 and Jurkat cell lysates;
 Primary antibody: 218504 (CSNK2A2 Antibody) at dilution 1/900;
 Secondary antibody: HRP-conjugated Goat anti rabbit IgG at 1/5000 dilution;
 Exposure time: 1 minute



Product Description

Pioneering GTPase and Oncogene Product Development since 2010
