

## CSNK1A1 RABBIT PAB

**Cat.#:** S213430

**Product Name:** Anti-CSNK1A1 Rabbit Polyclonal Antibody

**Synonyms:** CK1; CK1a; CK1α; HLCDGPI; PRO2975; HEL-S-77p

**UNIPROT ID:** P48729 (Gene Accession - NP\_001883 )

**Background:** Enables protein serine/threonine kinase activity. Involved in several processes, including negative regulation of canonical Wnt signaling pathway; peptidyl-serine phosphorylation; and positive regulation of proteasomal ubiquitin-dependent protein catabolic process. Located in centrosome; cytosol; and nuclear speck. Part of beta-catenin destruction complex. Colocalizes with keratin filament and mRNA cleavage and polyadenylation specificity factor complex. Biomarker of Alzheimer's disease and inclusion body myositis.

**Immunogen:** Synthetic peptide of human CSNK1A1

**Applications:** ELISA, WB, IHC

**Recommended Dilutions:** IHC: 50-100;WB: 500-2000;ELISA: 5000-10000

**Host Species:** Rabbit

**Clonality:** Rabbit Polyclonal

**Isotype:** Immunogen-specific rabbit IgG

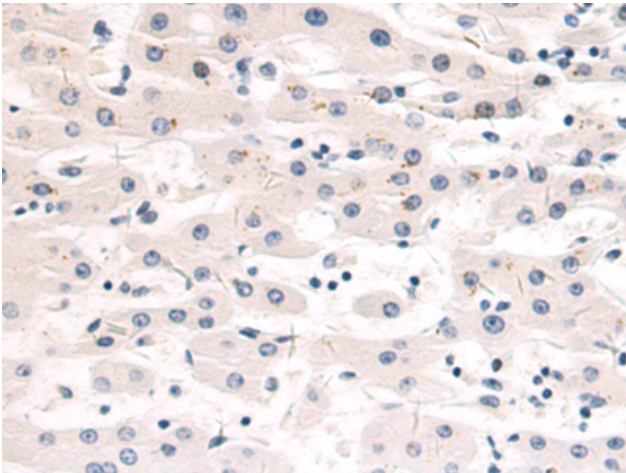
**Purification:** Antigen affinity purification

**Species Reactivity:** Human, Mouse

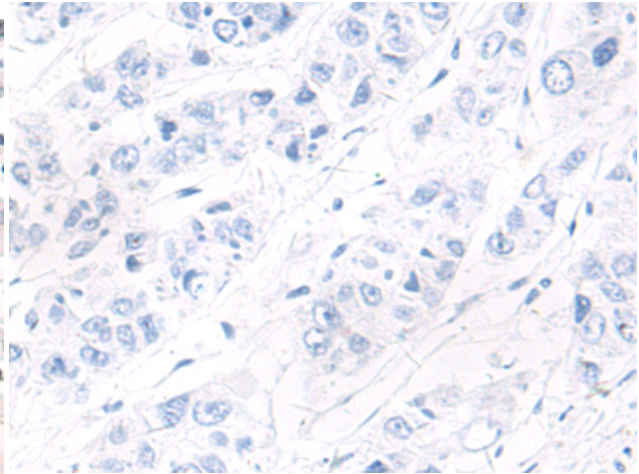
**Constituents:** PBS (without Mg<sup>2+</sup> and Ca<sup>2+</sup>), pH 7.4, 150 mM NaCl, 0.05% Sodium Azide and 40% glycerol

**Research Areas:** Signal Transduction

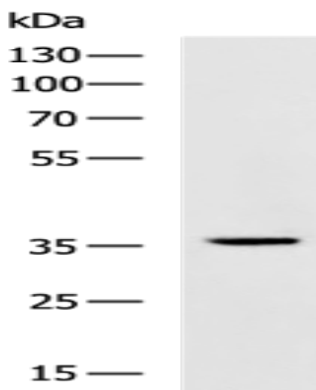
**Storage & Shipping:** Store at -20°C. Avoid repeated freezing and thawing



Immunohistochemistry analysis of paraffin embedded Human liver cancer tissue using 213430 (CSNK1A1 Antibody) at a dilution of 1/50 (Cytoplasm).



In comparison with the IHC on the left, the same paraffin-embedded Human liver cancer tissue is first treated with the synthetic peptide and then with 213430 (Anti-CSNK1A1 Antibody) at dilution 1/50.



Gel: 8% SDS-PAGE, Lysate: 40  $\mu$ g;  
Lane: Mouse brain tissue lysate;  
Primary antibody: 213430 (CSNK1A1 Antibody) at dilution 1/800;  
Secondary antibody: HRP-conjugated Goat anti rabbit IgG at 1/5000 dilution;  
Exposure time: 30 seconds