

CSHL1 RABBIT MAB

Cat.#: N262070

Product Name: Anti-CSHL1 Rabbit Monoclonal Antibody

Synonyms: Lactogen-like; Chorionic somatomammotropin-like

UNIPROT ID: Q14406

Background: May be a novel gestational hormone required to compensate for absence of other members of the GH/CS cluster during gestation.

Immunogen: Recombinant protein of human CSHL1

Applications: WB,IHC-P

Recommended Dilutions: WB: 1/500-1/1000 IHC: 1/50-1/100

Host Species: Rabbit

Clonality: Rabbit Monoclonal

Clone ID: R06-9I3

MW: Calculated MW: 25 kDa; Observed MW: 25 kDa

Isotype: IgG

Purification: Affinity Purified

Species Reactivity: Human

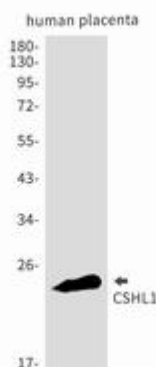
Conjugation: Unconjugated

Modification: Unmodified

Constituents: PBS (without Mg²⁺ and Ca²⁺), pH 7.3 containing 50% glycerol, 0.5% BSA and 0.02% sodium azide

Research Areas: Signal Transduction

Storage & Shipping: Store at -20°C. Avoid repeated freezing and thawing



Western blot analysis of CSHL1 in Human placenta lysates using CSHL1 antibody.



Product Description

Pioneering GTPase and Oncogene Product Development since 2010
