

## CSH1 RABBIT PAB

**Cat.#:** S217512

**Product Name:** Anti-CSH1 Rabbit Polyclonal Antibody

**Synonyms:** PL; CSA; CS-1; CSMT; hCS-1; hCS-A

**UNIPROT ID:** P0DML2 (Gene Accession - BC005921 )

**Background:** The protein encoded by this gene is a member of the somatotropin/prolactin family of hormones and plays an important role in growth control. The gene is located at the growth hormone locus on chromosome 17 along with four other related genes in the same transcriptional orientation; an arrangement which is thought to have evolved by a series of gene duplications. Although the five genes share a remarkably high degree of sequence identity, they are expressed selectively in different tissues. Alternative splicing generates additional isoforms of each of the five growth hormones, leading to further diversity and potential for specialization.

**Immunogen:** Fusion protein of human CSH1

**Applications:** ELISA, WB, IHC

**Recommended Dilutions:** IHC: 50-200;WB: 500-2000;ELISA: 2000-5000

**Host Species:** Rabbit

**Clonality:** Rabbit Polyclonal

**Isotype:** Immunogen-specific rabbit IgG

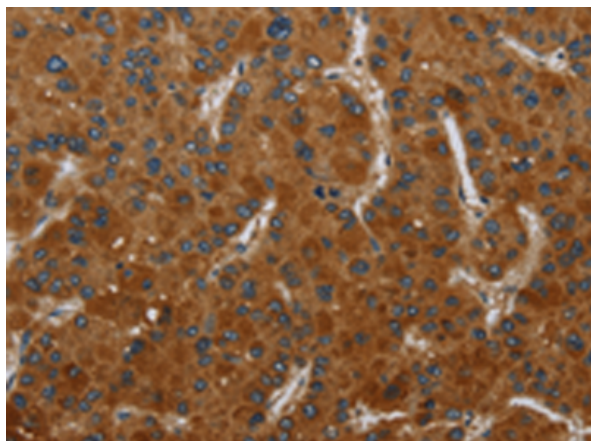
**Purification:** Antigen affinity purification

**Species Reactivity:** Human

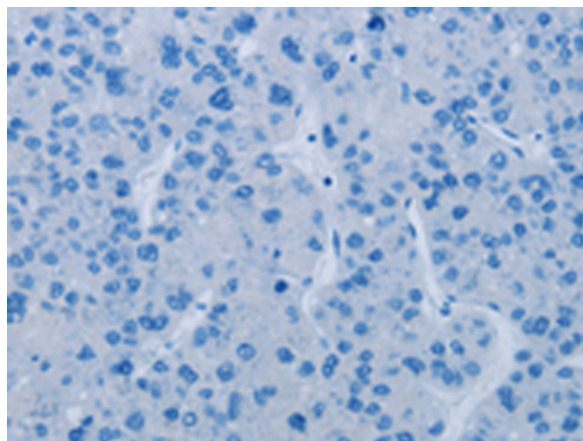
**Constituents:** PBS (without Mg<sup>2+</sup> and Ca<sup>2+</sup>), pH 7.4, 150 mM NaCl, 0.05% Sodium Azide and 40% glycerol

**Research Areas:** Signal Transduction

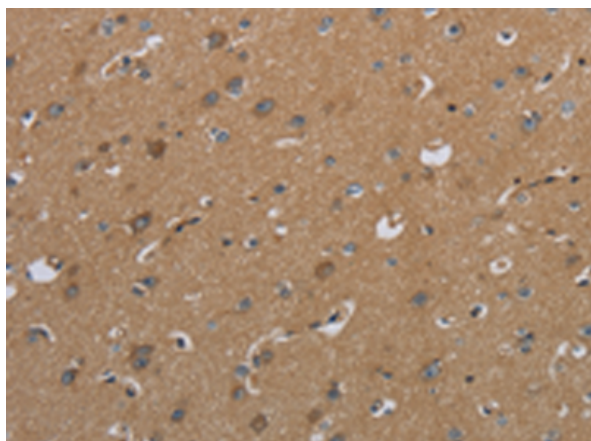
**Storage & Shipping:** Store at -20°C. Avoid repeated freezing and thawing



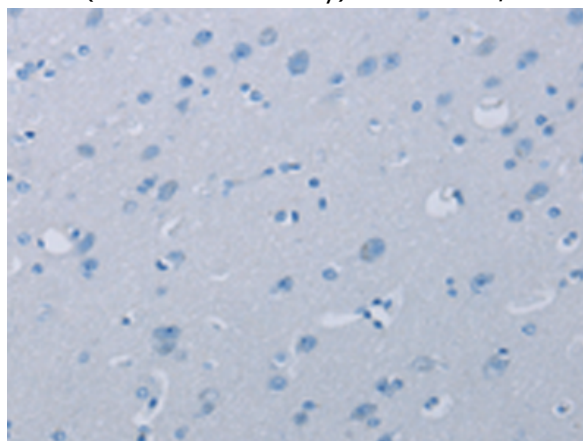
Immunohistochemistry analysis of paraffin embedded Human liver cancer tissue using 217512(CSH1 Antibody) at a dilution of 1/50(Cytoplasm).



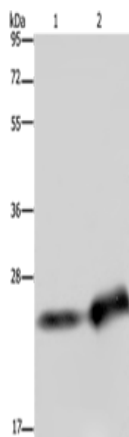
In comparison with the IHC on the left, the same paraffin-embedded Human liver cancer tissue is first treated with the fusion protein and then with 217512(Anti-CSH1 Antibody) at dilution 1/50.



The image on the left is immunohistochemistry of paraffin-embedded Human brain tissue using 217512(Anti-CSH1 Antibody) at a dilution of 1/50.



In comparison with the IHC on the left, the same paraffin-embedded Human brain tissue is first treated with fusion protein and then with D222496(Anti-CSH1 Antibody) at dilution 1/50.



Gel: 10%SDS-PAGE, Lysate: 40 µg;  
 Lane 1-2: Human breast infiltrative duct tissue,  
 Human placenta tissue;  
 Primary antibody: 217512(CSH1 Antibody) at  
 dilution 1/300;  
 Secondary antibody: Goat anti rabbit IgG at  
 1/8000 dilution;  
 Exposure time: 10 seconds



# Product Description

Pioneering GTPase and Oncogene Product Development since 2010

---