

CSF3R RABBIT PAB

Cat.#: S219817

Product Name: Anti-CSF3R Rabbit Polyclonal Antibody

Synonyms: CD114, GCSFR

UNIPROT ID: Q99062 (Gene Accession - NP_000751)

Background: The protein encoded by this gene is the receptor for colony stimulating factor 3, a cytokine that controls the production, differentiation, and function of granulocytes. The encoded protein, which is a member of the family of cytokine receptors, may also function in some cell surface adhesion or recognition processes. Alternatively spliced transcript variants have been described. Mutations in this gene are a cause of Kostmann syndrome, also known as severe congenital neutropenia.

Immunogen: Synthetic peptide of human CSF3R

Applications: ELISA, IHC

Recommended Dilutions: IHC: 15–50; ELISA: 1000–2000

Host Species: Rabbit

Clonality: Rabbit Polyclonal

Isotype: Immunogen-specific rabbit IgG

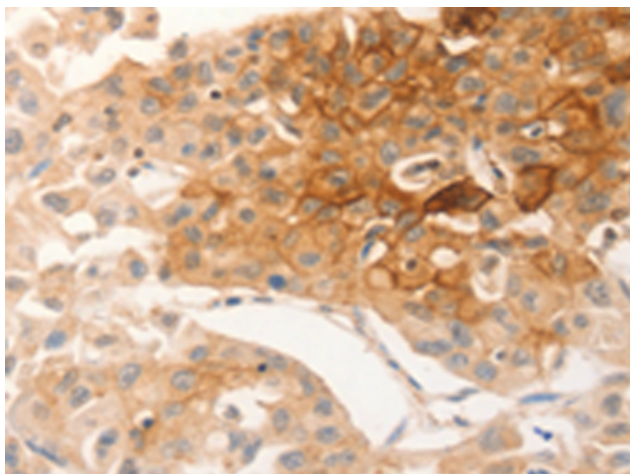
Purification: Antigen affinity purification

Species Reactivity: Human

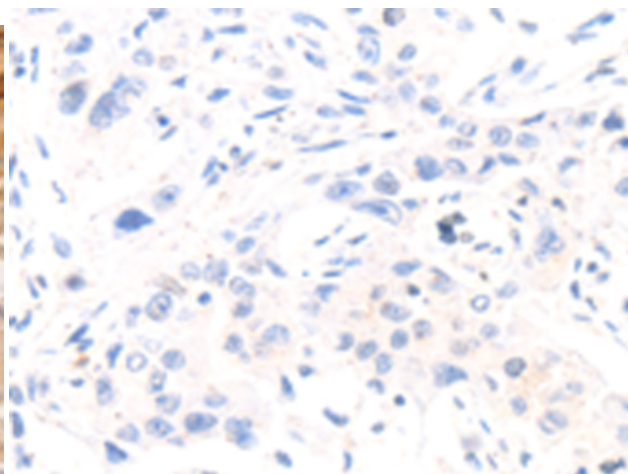
Constituents: PBS (without Mg²⁺ and Ca²⁺), pH 7.4, 150 mM NaCl, 0.05% Sodium Azide and 40% glycerol

Research Areas: Cancer, Immunology, Stem Cells

Storage & Shipping: Store at -20°C. Avoid repeated freezing and thawing



Immunohistochemistry analysis of paraffin embedded Human lung cancer tissue using 219817(CSF3R Antibody) at a dilution of 1/12(Cytoplasm, Cell membrane).



In comparison with the IHC on the left, the same paraffin-embedded Human lung cancer tissue is first treated with the synthetic peptide and then with 219817(Anti-CSF3R Antibody) at dilution 1/12.