

CSF3 RABBIT PAB

Cat.#: S213563

Product Name: Anti-CSF3 Rabbit Polyclonal Antibody

Synonyms: GCSF; CSF3OS; C17orf33

UNIPROT ID: P09919 (Gene Accession - NP_000750)

Background: This gene encodes a member of the IL-6 superfamily of cytokines. The encoded cytokine controls the production, differentiation, and function of granulocytes. Granulocytes are a type of white blood cell that are part of the innate immune response. A modified form of this protein is commonly administered to manage chemotherapy-induced neutropenia. Alternatively spliced transcript variants have been described for this gene.

Immunogen: Synthetic peptide of human CSF3

Applications: ELISA, IHC

Recommended Dilutions: IHC: 50-100; ELISA: 5000-10000

Host Species: Rabbit

Clonality: Rabbit Polyclonal

Isotype: Immunogen-specific rabbit IgG

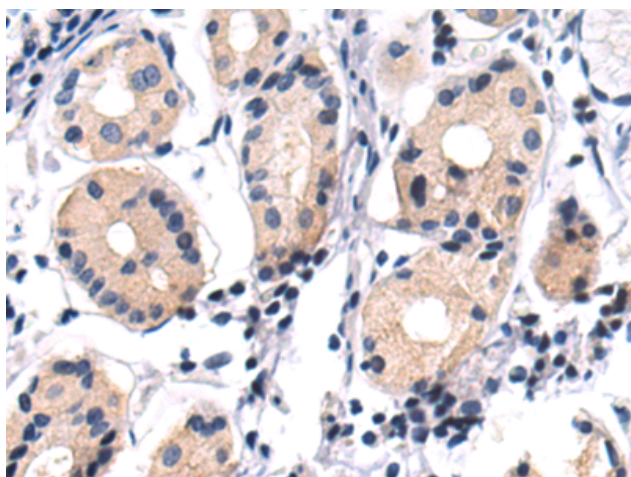
Purification: Antigen affinity purification

Species Reactivity: Human

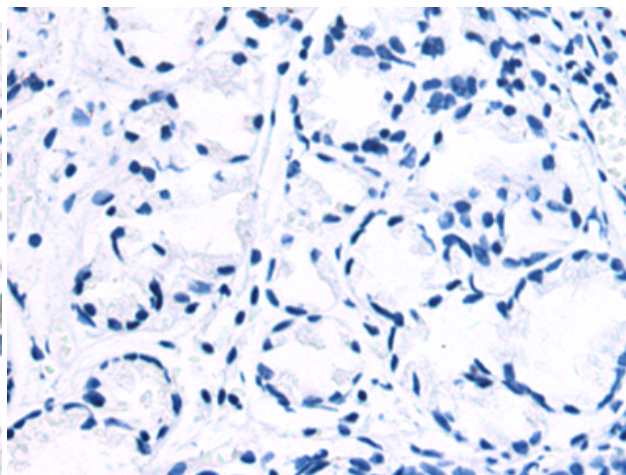
Constituents: PBS (without Mg²⁺ and Ca²⁺), pH 7.4, 150 mM NaCl, 0.05% Sodium Azide and 40% glycerol

Research Areas: Cardiovascular, Immunology

Storage & Shipping: Store at -20°C. Avoid repeated freezing and thawing



Immunohistochemistry analysis of paraffin embedded Human gastric cancer tissue using 213563 (CSF3 Antibody) at a dilution of 1/50 (Secreted).



In comparison with the IHC on the left, the same paraffin-embedded Human gastric cancer tissue is first treated with the synthetic peptide and then with 213563 (Anti-CSF3 Antibody) at dilution 1/50.