

CSF2 RABBIT PAB

Cat.#: S216536

Product Name: Anti-CSF2 Rabbit Polyclonal Antibody

Synonyms: CSF; GMCSF

UNIPROT ID: P04141 (Gene Accession - BC113999)

Background: The protein encoded by this gene is a cytokine that controls the production, differentiation, and function of granulocytes and macrophages. The active form of the protein is found extracellularly as a homodimer. This gene has been localized to a cluster of related genes at chromosome region 5q31, which is known to be associated with interstitial deletions in the 5q- syndrome and acute myelogenous leukemia. Other genes in the cluster include those encoding interleukins 4, 5, and 13.

Immunogen: Fusion protein of human CSF2

Applications: ELISA, WB, IHC

Recommended Dilutions: IHC: 150-300;WB: 500-2000;ELISA: 5000-10000

Host Species: Rabbit

Clonality: Rabbit Polyclonal

Isotype: Immunogen-specific rabbit IgG

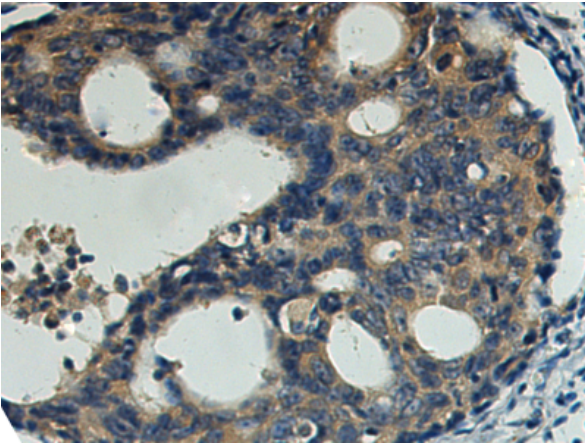
Purification: Antigen affinity purification

Species Reactivity: Human

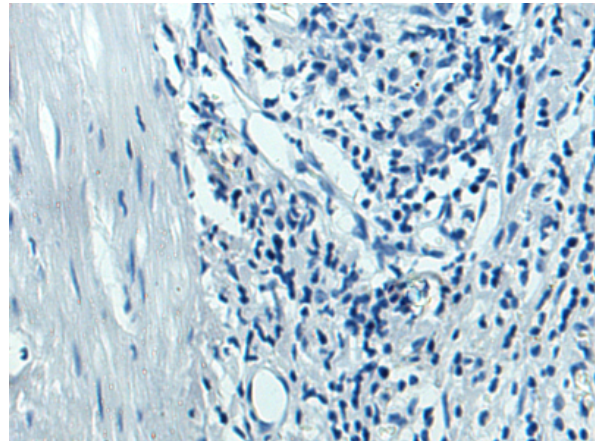
Constituents: PBS (without Mg²⁺ and Ca²⁺), pH 7.4, 150 mM NaCl, 0.05% Sodium Azide and 40% glycerol

Research Areas: Immunology

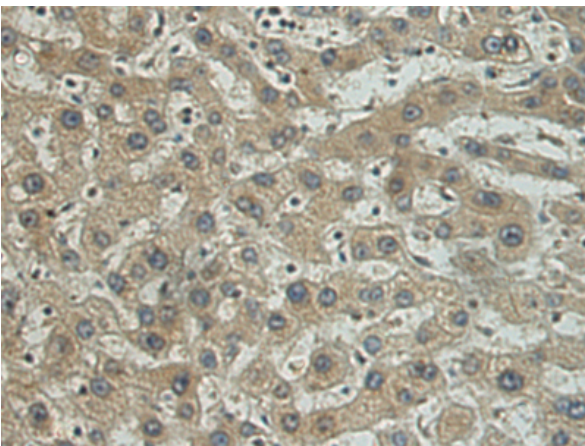
Storage & Shipping: Store at -20°C. Avoid repeated freezing and thawing



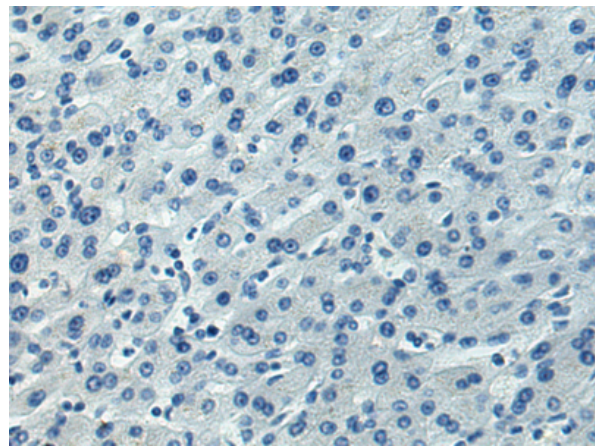
Immunohistochemistry analysis of paraffin embedded Human colorectal cancer tissue using 216536 (CSF2 Antibody) at a dilution of 1/150 (Secreted).



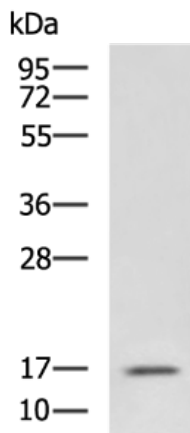
In comparison with the IHC on the left, the same paraffin-embedded Human colorectal cancer tissue is first treated with the fusion protein and then with 216536 (Anti-CSF2 Antibody) at dilution 1/150.



The image on the left is immunohistochemistry of paraffin-embedded Human liver cancer tissue using 216536 (Anti-CSF2 Antibody) at a dilution of 1/150.



In comparison with the IHC on the left, the same paraffin-embedded Human liver cancer tissue is first treated with fusion protein and then with D220700 (Anti-CSF2 Antibody) at dilution 1/150.



Gel: 12% SDS-PAGE, Lysate: 40 µg;
 Lane: HL60 cell lysate;
 Primary antibody: 216536 (CSF2 Antibody) at dilution 1/800;
 Secondary antibody: HRP-conjugated Goat anti rabbit IgG at 1/5000 dilution;
 Exposure time: 2 minutes



Product Description

Pioneering GTPase and Oncogene Product Development since 2010
