

## CS RABBIT PAB

**Cat.#:** S218502

**Product Name:** Anti-CS Rabbit Polyclonal Antibody

**Synonyms:**

**UNIPROT ID:** O75390 (Gene Accession - BC000105 )

**Background:** The protein encoded by this gene is a Krebs tricarboxylic acid cycle enzyme that catalyzes the synthesis of citrate from oxaloacetate and acetyl coenzyme A. The enzyme is found in nearly all cells capable of oxidative metabolism. This protein is nuclear encoded and transported into the mitochondrial matrix where the mature form is found.

**Immunogen:** Fusion protein of human CS

**Applications:** ELISA, WB, IHC

**Recommended Dilutions:** IHC: 100-200;WB: 500-2000;ELISA: 5000-10000

**Host Species:** Rabbit

**Clonality:** Rabbit Polyclonal

**Isotype:** Immunogen-specific rabbit IgG

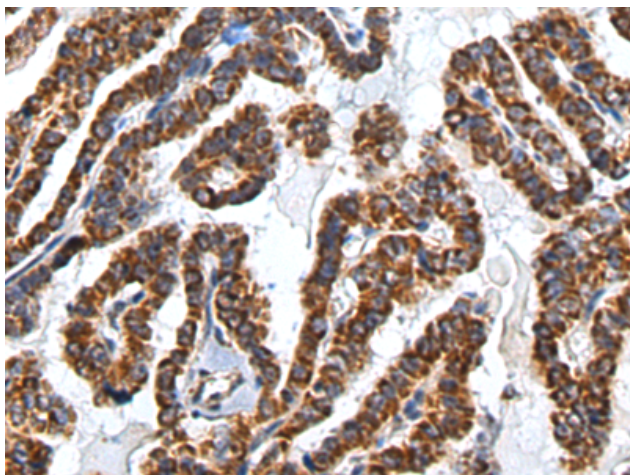
**Purification:** Antigen affinity purification

**Species Reactivity:** Human, Mouse, Rat

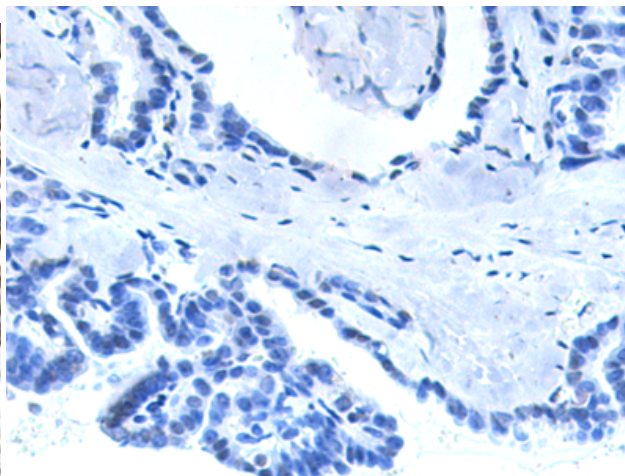
**Constituents:** PBS (without Mg<sup>2+</sup> and Ca<sup>2+</sup>), pH 7.4, 150 mM NaCl, 0.05% Sodium Azide and 40% glycerol

**Research Areas:** Metabolism

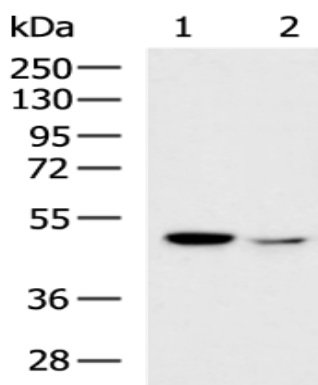
**Storage & Shipping:** Store at -20°C. Avoid repeated freezing and thawing



Immunohistochemistry analysis of paraffin embedded Human thyroid cancer tissue using 218502(CS Antibody) at a dilution of 1/80(Cytoplasm).



In comparison with the IHC on the left, the same paraffin-embedded Human thyroid cancer tissue is first treated with the fusion protein and then with 218502(Anti-CS Antibody) at dilution 1/80.



Gel: 8%SDS-PAGE, Lysate: 40 µg;  
Lane 1-2: LNCAP and K562 cell lysates;  
Primary antibody: 218502(CS Antibody) at dilution 1/600;  
Secondary antibody: HRP-conjugated Goat anti rabbit IgG at 1/5000 dilution;  
Exposure time: 2 minutes