

CRTC3 RABBIT MAB

Cat.#: N261630

Product Name: Anti-CRTC3 Rabbit Monoclonal Antibody

Synonyms: TORC3; FLJ21868; CRTC3

UNIPROT ID: Q6UUV7

Background: Transcriptional coactivator for CREB1 which activates transcription through both consensus and variant cAMP response element (CRE) sites. Acts as a coactivator, in the SIK/TORC signaling pathway, being active when dephosphorylated and acts independently of CREB1 'Ser-133' phosphorylation. Enhances the interaction of CREB1 with TAF4. Regulates the expression of specific CREB-activated genes such as the steroidogenic gene, StAR. Potent coactivator of PPARGC1A and inducer of mitochondrial biogenesis in muscle cells. Also coactivator for TAX activation of the human T-cell leukemia virus type 1 (HTLV-1) long terminal repeats (LTR). Tissue specificity: Predominantly expressed in B and T lymphocytes. Highest levels in lung. Also expressed in brain, colon, heart, kidney, ovary, and prostate. Weak expression in liver, pancreas, muscle, small intestine, spleen and stomach.

Immunogen: A synthetic peptide of human CRTC3

Applications: WB, ICC/IF

Recommended Dilutions: WB: 1/500-1/1000 IF: 1/50-1/200

Host Species: Rabbit

Clonality: Rabbit Monoclonal

Clone ID: R07-4C9

MW: Calculated MW: 67 kDa; Observed MW: 78 kDa

Isotype: IgG

Purification: Affinity Purified

Species Reactivity: Human, Mouse, Rat

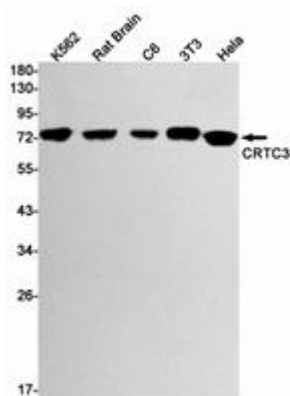
Conjugation: Unconjugated

Modification: Unmodified

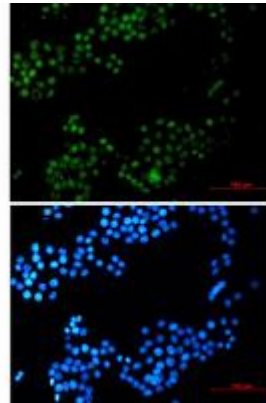
Constituents: PBS (without Mg²⁺ and Ca²⁺), pH 7.3 containing 50% glycerol, 0.5% BSA and 0.02% sodium azide

Research Areas: Microbiology

Storage & Shipping: Store at -20°C. Avoid repeated freezing and thawing



Western blot analysis of CRTC3 in K562, rat Brain, C6, 3T3, HeLa lysates using CRTC3 antibody.



Immunocytochemistry analysis of CRTC3 (green) in HeLa using CRTC3 antibody, and DAPI (blue).