

## CROT RABBIT PAB

**Cat.#:** S217309

**Product Name:** Anti-CROT Rabbit Polyclonal Antibody

**Synonyms:** COT

**UNIPROT ID:** Q9UKG9 (Gene Accession - BC051874 )

**Background:** This gene encodes a member of the carnitine/choline acetyltransferase family. The encoded protein converts 4,8-dimethylnonanoyl-CoA to its corresponding carnitine ester. This transesterification occurs in the peroxisome and is necessary for transport of medium- and long-chain acyl-CoA molecules out of the peroxisome to the cytosol and mitochondria. The protein thus plays a role in lipid metabolism and fatty acid beta-oxidation. Alternatively spliced transcript variants have been described.

**Immunogen:** Fusion protein of human CROT

**Applications:** ELISA, WB, IHC

**Recommended Dilutions:** IHC: 150-300;WB: 1000-5000;ELISA: 5000-10000

**Host Species:** Rabbit

**Clonality:** Rabbit Polyclonal

**Isotype:** Immunogen-specific rabbit IgG

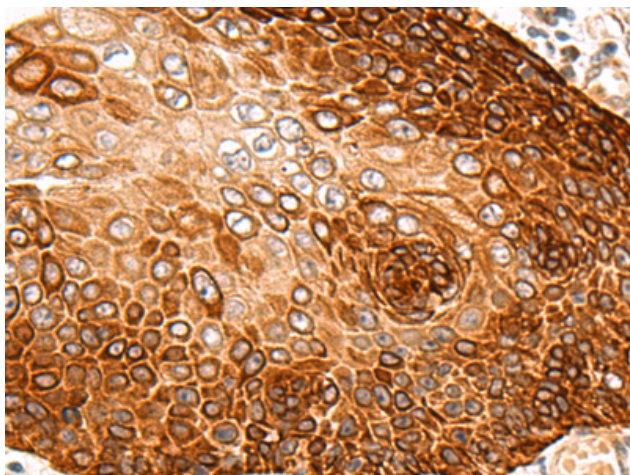
**Purification:** Antigen affinity purification

**Species Reactivity:** Human, Mouse, Rat

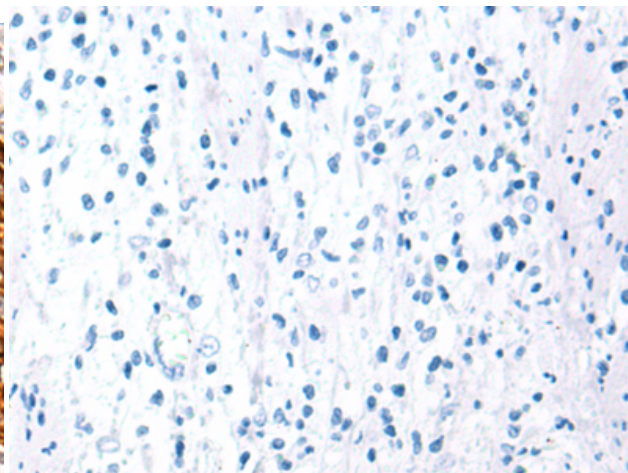
**Constituents:** PBS (without Mg<sup>2+</sup> and Ca<sup>2+</sup>), pH 7.4, 150 mM NaCl, 0.05% Sodium Azide and 40% glycerol

**Research Areas:** Metabolism, Cancer, Cardiovascular

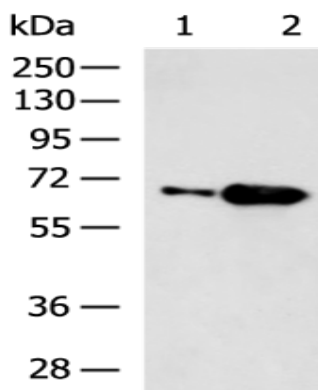
**Storage & Shipping:** Store at -20°C. Avoid repeated freezing and thawing



Immunohistochemistry analysis of paraffin embedded Human esophagus cancer tissue using 217309(CROT Antibody) at a dilution of 1/115(Cytoplasm).



In comparison with the IHC on the left, the same paraffin-embedded Human esophagus cancer tissue is first treated with the fusion protein and then with 217309(Anti-CROT Antibody) at dilution 1/115.



Gel: 8%SDS-PAGE, Lysate: 40  $\mu$ g;  
 Lane 1-2: Mouse liver tissue, Mouse kidney tissue lysates;  
 Primary antibody: 217309(CROT Antibody) at dilution 1/800;  
 Secondary antibody: HRP-conjugated Goat anti rabbit IgG at 1/5000 dilution;  
 Exposure time: 30 seconds