

## CRIPTO 3 RABBIT PAB

**Cat.#:** N225205

**Product Name:** Anti-Cripto 3 Rabbit pAb

**Synonyms:** TDGFIP3; CRIPTO3; TDGF2; TDGF3; Putative teratocarcinoma-derived growth factor 3; Cripto-3 growth factor; Epidermal growth factor-like cripto protein CR3; Teratocarcinoma-derived growth factor 1 pseudogene 3

**UNIPROT ID:** P51864

**Background:** Could play a role in the determination of the epiblastic cells that subsequently give rise to the mesoderm.

**Immunogen:** The antiserum was produced against synthesized peptide derived from the Internal region of human TDGFIP3. AA range:1-50

**Applications:** WB,ELISA

**Recommended Dilutions:** WB: 1/500-1/1000 ELISA: 1/10000

**Host Species:** Rabbit

**Clonality:** Rabbit Polyclonal

**Clone ID:** -

**MW:** Calculated MW: 21 kDa; Observed MW: 21 kDa

**Isotype:** IgG

**Purification:** Affinity Purified

**Species Reactivity:** Human

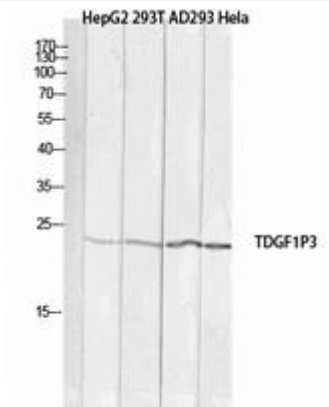
**Conjugation:** Unconjugated

**Modification:** Unmodified

**Constituents:** PBS (without Mg<sup>2+</sup> and Ca<sup>2+</sup>), pH 7.3 containing 50% glycerol, 0.5% BSA and 0.02% sodium azide

**Research Areas:** Cell Biology

**Storage & Shipping:** Store at -20°C. Avoid repeated freezing and thawing



Western blot analysis of Cripto 3 in HepG2, 293T , AD293 , HeLa lysates using Cripto 3 antibody.