

## CREATINE KINASE B TYPE RABBIT PAB

**Cat.#:** N225973

**Product Name:** Anti-Creatine Kinase B type Rabbit pAb

**Synonyms:** BCK; Ckb; CKBB; HEL 211; HEL S 29

**UNIPROT ID:** P12277

**Background:** Reversibly catalyzes the transfer of phosphate between ATP and various phosphogens (e.g. creatine phosphate). Creatine kinase isoenzymes play a central role in energy transduction in tissues with large, fluctuating energy demands, such as skeletal muscle, heart, brain and spermatozoa.

**Immunogen:** A synthesized peptide derived from human Creatine kinase B type

**Applications:** WB,IHC-P,ICC/IF,IP,FC

**Recommended Dilutions:** WB: 1/500-1/1000 IHC: 1/50-1/100 IF: 1/50-1/200 IP: 1/20 FC: 1/50-1/100

**Host Species:** Rabbit

**Clonality:** Rabbit Polyclonal

**Clone ID:** -

**MW:** Calculated MW: 43 kDa; Observed MW: 43 kDa

**Isotype:** IgG

**Purification:** Affinity Chromatography

**Species Reactivity:** Human,Mouse,Rat

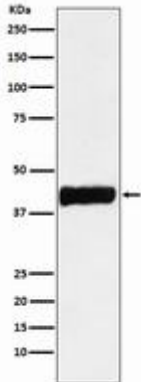
**Conjugation:** Unconjugated

**Modification:** Unmodified

**Constituents:** PBS (without Mg<sup>2+</sup> and Ca<sup>2+</sup>), pH 7.3 containing 50% glycerol, 0.5% BSA and 0.02% sodium azide

**Research Areas:** Neuroscience

**Storage & Shipping:** Store at -20°C. Avoid repeated freezing and thawing



Western blot analysis of Creatine kinase B type in SH-SY5Y lysates using Creatine Kinase B type antibody.