

## CREATINE KINASE B TYPE RABBIT MAB

**Cat.#:** N262064

**Product Name:** Anti-Creatine Kinase B type Rabbit Monoclonal Antibody

**Synonyms:** BCK; Ckb; CKBB; HEL 211; HEL S 29

**UNIPROT ID:** P12277

**Background:** Reversibly catalyzes the transfer of phosphate between ATP and various phosphogens (e.g. creatine phosphate). Creatine kinase isoenzymes play a central role in energy transduction in tissues with large, fluctuating energy demands, such as skeletal muscle, heart, brain and spermatozoa.

**Immunogen:** A synthetic peptide of human Creatine kinase B type

**Applications:** WB,IHC-P

**Recommended Dilutions:** WB: 1/500-1/1000 IHC: 1/50-1/100

**Host Species:** Rabbit

**Clonality:** Rabbit Monoclonal

**Clone ID:** R03-4C1

**MW:** Calculated MW: 43 kDa; Observed MW: 43 kDa

**Isotype:** IgG

**Purification:** Affinity Purified

**Species Reactivity:** Human,Mouse,Rat

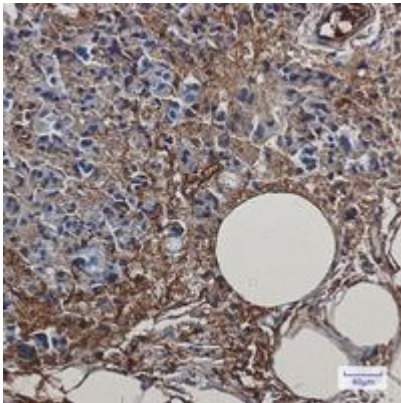
**Conjugation:** Unconjugated

**Modification:** Unmodified

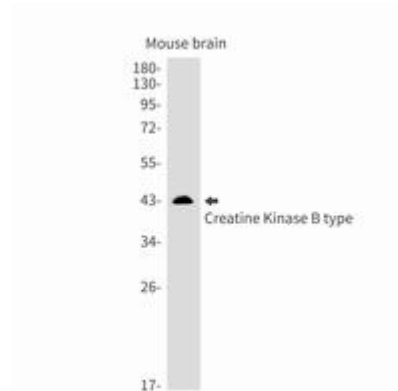
**Constituents:** PBS (without Mg<sup>2+</sup> and Ca<sup>2+</sup>), pH 7.3 containing 50% glycerol, 0.5% BSA and 0.02% sodium azide

**Research Areas:** Neuroscience

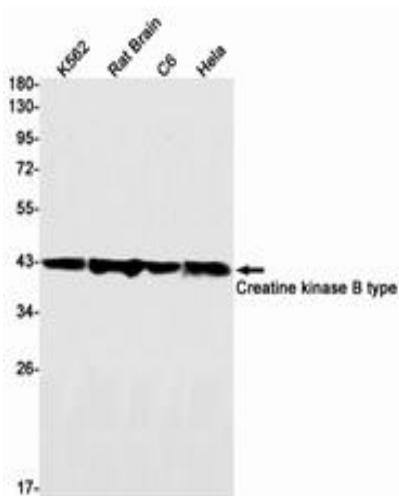
**Storage & Shipping:** Store at -20°C. Avoid repeated freezing and thawing



Immunohistochemistry analysis of paraffin-embedded Human breast cancer using Creatine kinase B type antibody. High-pressure and temperature Sodium Citrate pH 6.0 was used for antigen retrieval.



Western blot analysis of Creatine Kinase B type in mouse brain lysates using Creatine Kinase B type antibody.



Western blot analysis of Creatine kinase B type in K562, rat Brain, C6, HeLa lysates using Creatine kinase B type antibody.