

CRCP RABBIT MAB

Cat.#: N263279

Product Name: Anti-CRCP Rabbit Monoclonal Antibody

Synonyms: C17; RCP; RCP9; RPC9; POLR3I; POLR3J; CGRPRCP; CGRP-RCP

UNIPROT ID: O75575

Background: DNA-dependent RNA polymerase catalyzes the transcription of DNA into RNA using the four ribonucleoside triphosphates as substrates.

Immunogen: A synthetic peptide of human CRCP

Applications: WB,IHC-F,IHC-P,ICC/IF,IP

Recommended Dilutions: WB: 1/500-1/1000 IHC: 1/50-1/100 IF: 1/50-1/200 IP: 1/20

Host Species: Rabbit

Clonality: Rabbit Monoclonal

Clone ID: R03-6G8

MW: Calculated MW: 17 kDa; Observed MW: 17 kDa

Isotype: IgG

Purification: Affinity Purified

Species Reactivity: Human,Mouse,Rat

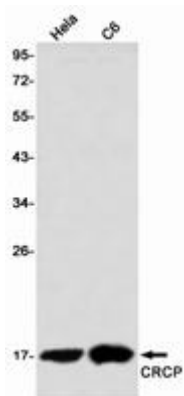
Conjugation: Unconjugated

Modification: Unmodified

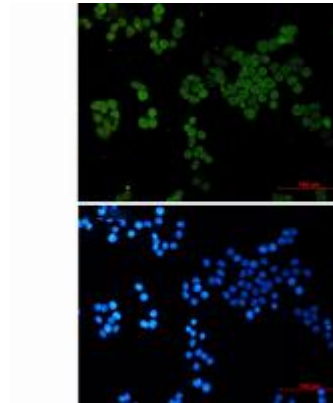
Constituents: PBS (without Mg²⁺ and Ca²⁺), pH 7.3 containing 50% glycerol, 0.5% BSA and 0.02% sodium azide

Research Areas: Neuroscience

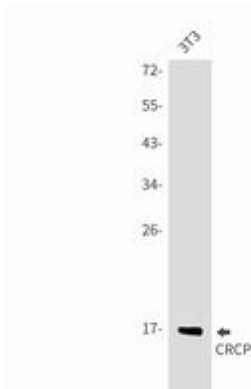
Storage & Shipping: Store at -20°C. Avoid repeated freezing and thawing



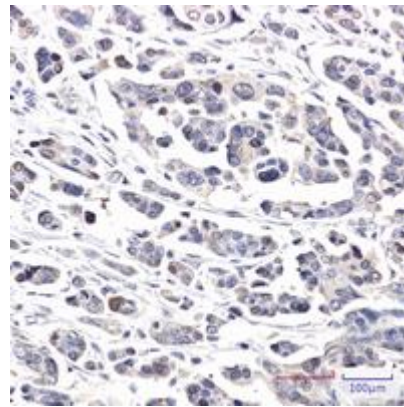
Western blot analysis of CRCP in HeLa, C6 lysates using CRCP antibody



Immunocytochemistry analysis of CRCP (green) in HeLa using CRCP antibody, and DAPI (blue).



Western blot analysis of CRCP in 3T3 lysates using CRCP antibody.



Immunohistochemistry analysis of paraffin-embedded Human Cholangiocarcinoma using CRCP antibody. High-pressure and temperature Sodium Citrate pH 6.0 was used for antigen retrieval.