

CRB3 RABBIT PAB

Cat.#: S218556

Product Name: Anti-CRB3 Rabbit Polyclonal Antibody

Synonyms:

UNIPROT ID: Q9BUF7 (Gene Accession - BC018409)

Background: This gene encodes a member of the Crumbs family of proteins. This gene is widely expressed in epithelial tissues where the encoded protein isoforms play various roles such as the control of cytokinesis and ciliogenesis or the formation of tight junctions. Alternative splicing results in multiple transcript variants encoding different isoforms.

Immunogen: Fusion protein of human CRB3

Applications: ELISA, IHC

Recommended Dilutions: IHC: 25-100; ELISA: 5000-10000

Host Species: Rabbit

Clonality: Rabbit Polyclonal

Isotype: Immunogen-specific rabbit IgG

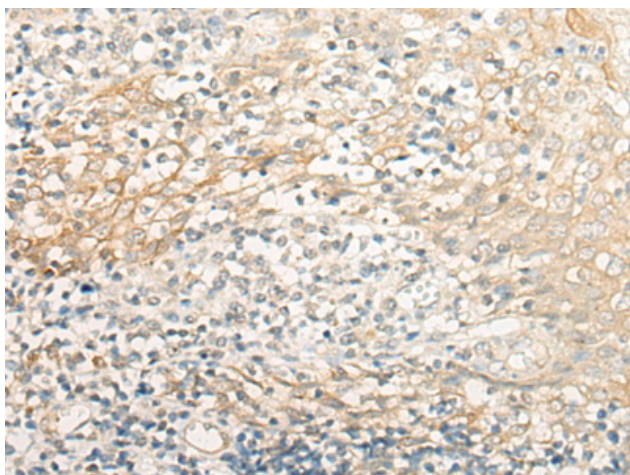
Purification: Antigen affinity purification

Species Reactivity: Human

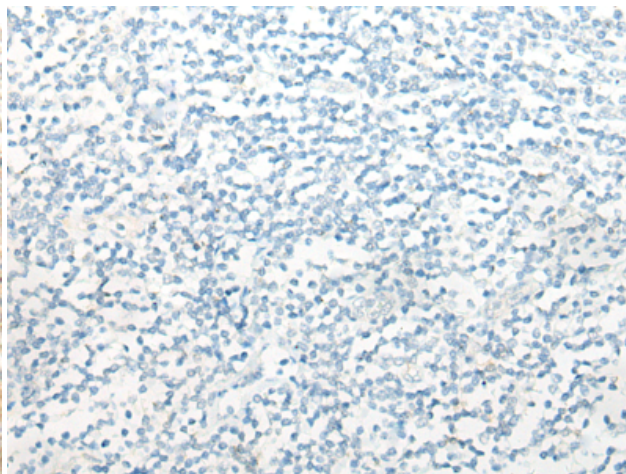
Constituents: PBS (without Mg²⁺ and Ca²⁺), pH 7.4, 150 mM NaCl, 0.05% Sodium Azide and 40% glycerol

Research Areas: Signal Transduction

Storage & Shipping: Store at -20°C. Avoid repeated freezing and thawing



Immunohistochemistry analysis of paraffin embedded Human tonsil tissue using 218556(CRB3 Antibody) at a dilution of 1/30(Cell membrane and Cytoplasm).



In comparison with the IHC on the left, the same paraffin-embedded Human tonsil tissue is first treated with the fusion protein and then with 218556(Anti-CRB3 Antibody) at dilution 1/30.