

## CRACR2A RABBIT PAB

**Cat.#:** S219378

**Product Name:** Anti-CRACR2A Rabbit Polyclonal Antibody

**Synonyms:** EFCAB4B

**UNIPROT ID:** Q9BSW2 (Gene Accession - BC004524 )

**Background:** Ca<sup>2+</sup>-binding protein that plays a key role in store-operated Ca<sup>2+</sup> entry (SOCE) in T-cells by regulating CRAC channel activation. Acts as a cytoplasmic calcium-sensor that facilitates the clustering of ORA11 and STIM1 at the junctional regions between the plasma membrane and the endoplasmic reticulum upon low Ca<sup>2+</sup> concentration. It thereby regulates CRAC channel activation, including translocation and clustering of ORA11 and STIM1. Upon increase of cytoplasmic Ca<sup>2+</sup> resulting from opening of CRAC channels, dissociates from ORA11 and STIM1, thereby destabilizing the ORA11-STIM1 complex.

**Immunogen:** Fusion protein of human CRACR2A

**Applications:** ELISA, IHC

**Recommended Dilutions:** IHC: 50-200; ELISA: 5000-10000

**Host Species:** Rabbit

**Clonality:** Rabbit Polyclonal

**Isotype:** Immunogen-specific rabbit IgG

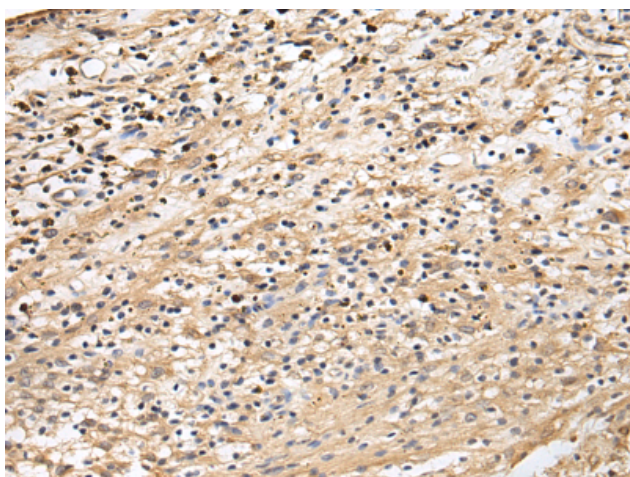
**Purification:** Antigen affinity purification

**Species Reactivity:** Human

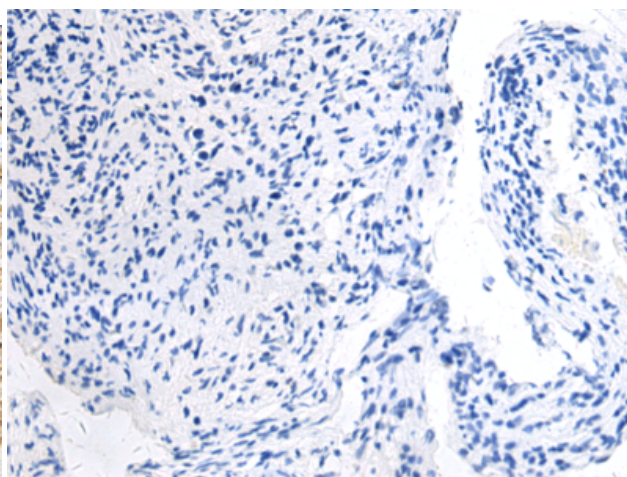
**Constituents:** PBS (without Mg<sup>2+</sup> and Ca<sup>2+</sup>), pH 7.4, 150 mM NaCl, 0.05% Sodium Azide and 40% glycerol

**Research Areas:** Signal Transduction

**Storage & Shipping:** Store at -20°C. Avoid repeated freezing and thawing



Immunohistochemistry analysis of paraffin embedded Human brain tissue using 219378(CRACR2A Antibody) at a dilution of 1/60(Cytoplasm).



In comparison with the IHC on the left, the same paraffin-embedded Human brain tissue is first treated with the fusion protein and then with 219378(Anti-CRACR2A Antibody) at dilution 1/60.