

CRABP1 RABBIT PAB

Cat.#: S218554

Product Name: Anti-CRABP1 Rabbit Polyclonal Antibody

Synonyms: RBP5; CRABP; CRABPI; CRABP-I

UNIPROT ID: P29762 (Gene Accession - BC022069)

Background: This gene encodes a specific binding protein for a vitamin A family member and is thought to play an important role in retinoic acid-mediated differentiation and proliferation processes. It is structurally similar to the cellular retinol-binding proteins, but binds only retinoic acid at specific sites within the nucleus, which may contribute to vitamin A-directed differentiation in epithelial tissue.

Immunogen: Fusion protein of human CRABP1

Applications: ELISA, WB, IHC

Recommended Dilutions: IHC: 100-300;WB: 1000-5000;ELISA: 5000-10000

Host Species: Rabbit

Clonality: Rabbit Polyclonal

Isotype: Immunogen-specific rabbit IgG

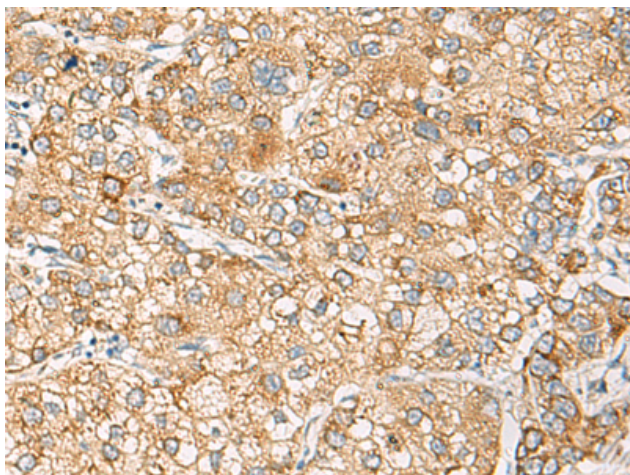
Purification: Antigen affinity purification

Species Reactivity: Human, Mouse, Rat

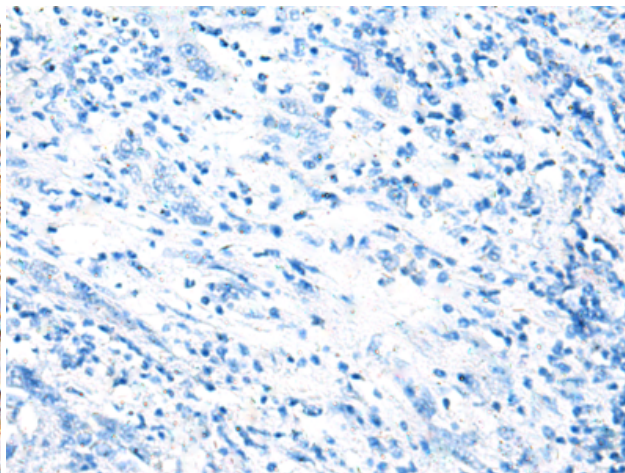
Constituents: PBS (without Mg²⁺ and Ca²⁺), pH 7.4, 150 mM NaCl, 0.05% Sodium Azide and 40% glycerol

Research Areas: Signal Transduction, Epigenetics and Nuclear Signaling

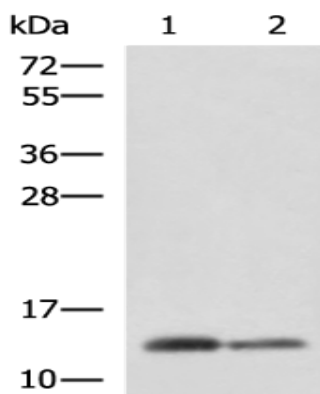
Storage & Shipping: Store at -20°C. Avoid repeated freezing and thawing



Immunohistochemistry analysis of paraffin embedded Human liver cancer tissue using 218554(CRABP1 Antibody) at a dilution of 1/120(Cytoplasm).



In comparison with the IHC on the left, the same paraffin-embedded Human liver cancer tissue is first treated with the fusion protein and then with 218554(Anti-CRABP1 Antibody) at dilution 1/120.



Gel: 12%SDS-PAGE, Lysate: 40 μ g;
 Lane 1-2: Human breast tissue and Human thyroid tissue lysates;
 Primary antibody: 218554(CRABP1 Antibody) at dilution 1/2000;
 Secondary antibody: HRP-conjugated Goat anti rabbit IgG at 1/5000 dilution;
 Exposure time: 1 minute