

## CPS1 RABBIT MAB

**Cat.#:** N263278

**Product Name:** Anti-CPS1 Rabbit Monoclonal Antibody

**Synonyms:** Cps1; CPSase I; CPSase I; CPSASEI; MS738

**UNIPROT ID:** P31327

**Background:** Involved in the urea cycle of ureotelic animals where the enzyme plays an important role in removing excess ammonia from the cell.

**Immunogen:** A synthetic peptide of human CPS1

**Applications:** WB,IHC-P,IP

**Recommended Dilutions:** WB: 1/500-1/1000 IHC: 1/50-1/100 IP: 1/20

**Host Species:** Rabbit

**Clonality:** Rabbit Monoclonal

**Clone ID:** R01-2A0

**MW:** Calculated MW: 165 kDa; Observed MW: 160 kDa

**Isotype:** IgG

**Purification:** Affinity Purified

**Species Reactivity:** Human

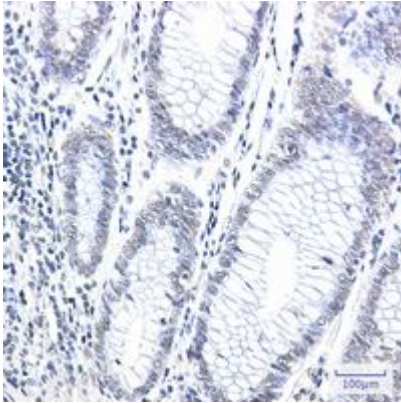
**Conjugation:** Unconjugated

**Modification:** Unmodified

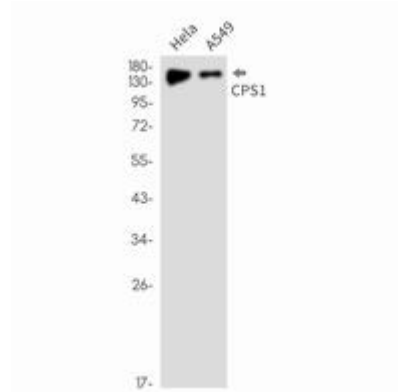
**Constituents:** PBS (without Mg<sup>2+</sup> and Ca<sup>2+</sup>), pH 7.3 containing 50% glycerol, 0.5% BSA and 0.02% sodium azide

**Research Areas:** Tags & Cell Markers

**Storage & Shipping:** Store at -20°C. Avoid repeated freezing and thawing



Immunohistochemistry analysis of paraffin-embedded Human colon cancer using CPS1 antibody. High-pressure and temperature Sodium Citrate pH 6.0 was used for antigen retrieval.



Western blot analysis of CPS1 in HeLa, A549 lysates using CPS1 antibody.