

CPEB4 RABBIT PAB

Cat.#: S218546

Product Name: Anti-CPEB4 Rabbit Polyclonal Antibody

Synonyms: CPE-BP4; hCPEB-4

UNIPROT ID: Q17RY0 (Gene Accession - BC036899)

Background: Enables RNA binding activity. Predicted to be involved in several processes, including cellular response to glucose starvation; negative regulation of cytoplasmic translation; and response to ischemia. Located in cytoplasm and nucleus. Biomarker of liver cirrhosis; portal hypertension; and primary biliary cholangitis.

Immunogen: Fusion protein of human CPEB4

Applications: ELISA, WB, IHC

Recommended Dilutions: IHC: 50-200;WB: 1000-5000;ELISA: 5000-10000

Host Species: Rabbit

Clonality: Rabbit Polyclonal

Isotype: Immunogen-specific rabbit IgG

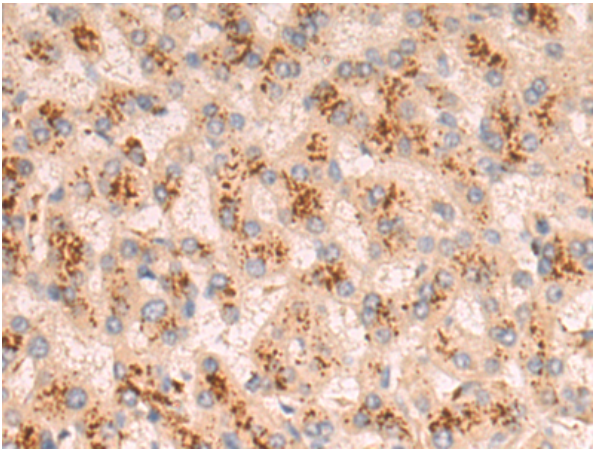
Purification: Antigen affinity purification

Species Reactivity: Human, Mouse

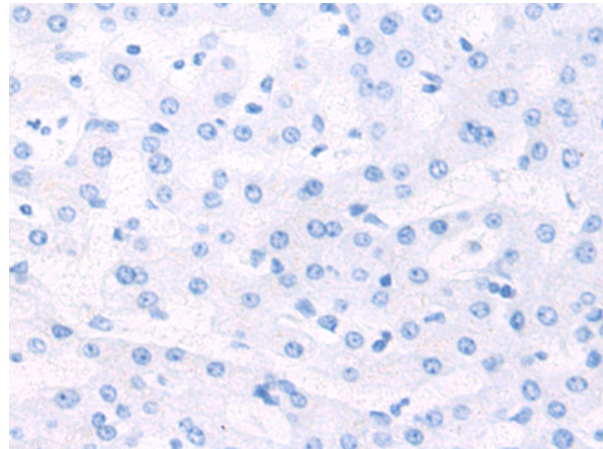
Constituents: PBS (without Mg²⁺ and Ca²⁺), pH 7.4, 150 mM NaCl, 0.05% Sodium Azide and 40% glycerol

Research Areas: Epigenetics and Nuclear Signaling

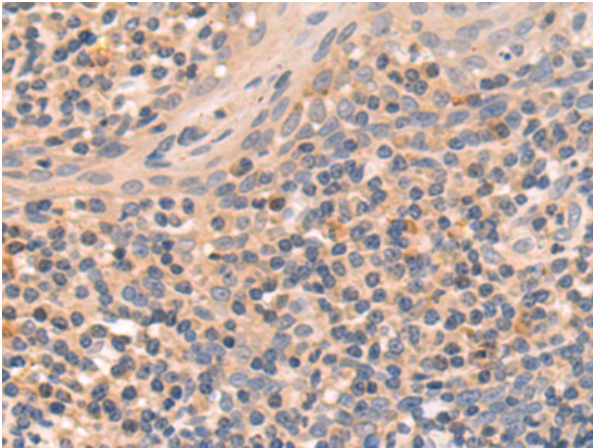
Storage & Shipping: Store at -20°C. Avoid repeated freezing and thawing



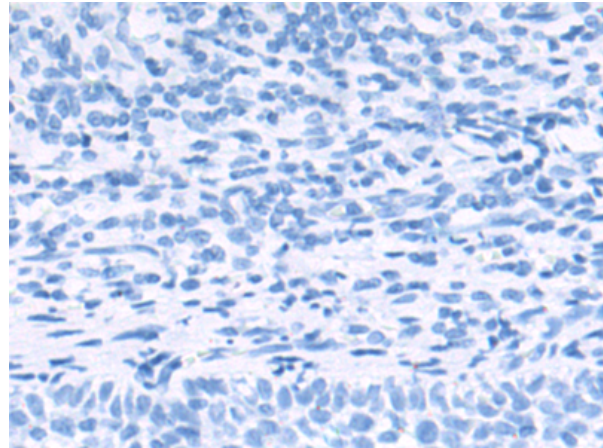
Immunohistochemistry analysis of paraffin embedded Human liver cancer tissue using 218546(CPEB4 Antibody) at a dilution of 1/80(Cytoplasm).



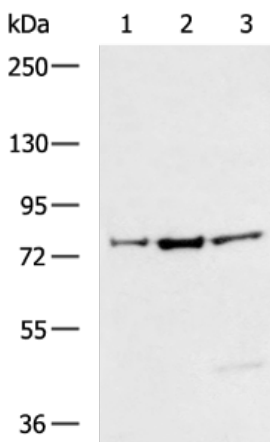
In comparison with the IHC on the left, the same paraffin-embedded Human liver cancer tissue is first treated with the fusion protein and then with 218546(Anti-CPEB4 Antibody) at dilution 1/80.



The image on the left is immunohistochemistry of paraffin-embedded Human tonsil tissue using 218546(Anti-CPEB4 Antibody) at a dilution of 1/80.



In comparison with the IHC on the left, the same paraffin-embedded Human tonsil tissue is first treated with fusion protein and then with D224658(Anti-CPEB4 Antibody) at dilution 1/80.



Gel: 6%SDS-PAGE, Lysate: 40 µg;
 Lane 1-3: A375, PC3, HepG2 cell lysates;
 Primary antibody: 218546(CPEB4 Antibody) at dilution 1/1200;
 Secondary antibody: HRP-conjugated Goat anti rabbit IgG at 1/5000 dilution;
 Exposure time: 5 minutes



Product Description

Pioneering GTPase and Oncogene Product Development since 2010
