

## COX6B2 RABBIT PAB

**Cat.#:** S210242

**Product Name:** Anti-COX6B2 Rabbit Polyclonal Antibody

**Synonyms:** CT59; COXVIB2

**UNIPROT ID:** Q6YFQ2 (Gene Accession - BC064548 )

**Background:** The cytochrome c oxidase (COX) family of proteins function as the final electron donor in the respiratory chain to drive a proton gradient across the inner mitochondrial membrane, ultimately resulting in the production of water. The mammalian COX apoenzyme is a dimer, with each monomer consisting of 13 subunits, some of which are mitochondrial and some of which are nuclear. Localized to the intermembrane space, COX6b2 (Cytochrome c oxidase subunit 6B2), also known as Cytochrome c oxidase subunit VIb isoform 2 and Cancer/testis antigen 59, is a 88 amino acid mitochondrial protein that is responsible for joining the two COX monomers to form the COX dimer. COX6b2 is specifically expressed in testis and is found to be upregulated in certain cancer cell lines.

**Immunogen:** Fusion protein of human COX6B2

**Applications:** ELISA, WB, IHC

**Recommended Dilutions:** IHC: 100-200;WB: 500-2000;ELISA: 5000-10000

**Host Species:** Rabbit

**Clonality:** Rabbit Polyclonal

**Isotype:** Immunogen-specific rabbit IgG

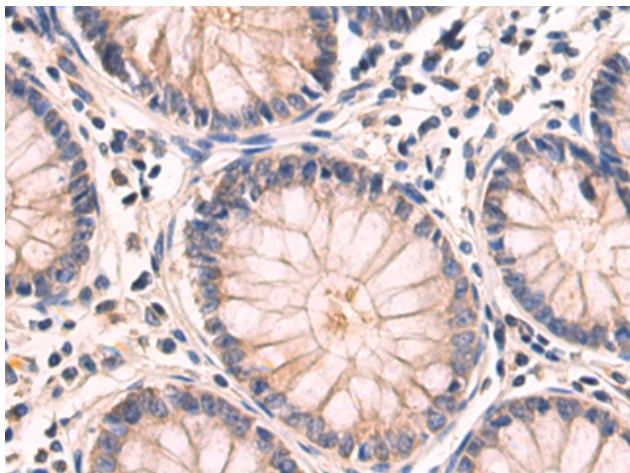
**Purification:** Antigen affinity purification

**Species Reactivity:** Human, Mouse

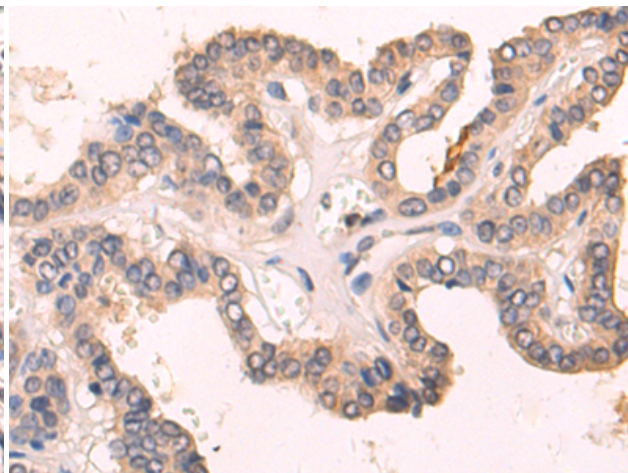
**Constituents:** PBS (without Mg<sup>2+</sup> and Ca<sup>2+</sup>), pH 7.4, 150 mM NaCl, 0.05% Sodium Azide and 40% glycerol

**Research Areas:** Cancer

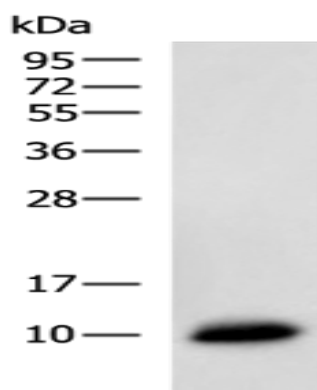
**Storage & Shipping:** Store at -20°C. Avoid repeated freezing and thawing



Immunohistochemistry analysis of paraffin-embedded Human colorectal cancer tissue using 210242(COX6B2 Antibody) at a dilution of 1/135(Cytoplasm).



Immunohistochemistry analysis of paraffin-embedded Human thyroid cancer tissue using 210242(Anti-COX6B2 Antibody) at a dilution of 1/135.



Gel: 12%SDS-PAGE, Lysate: 40  $\mu$ g;  
Lane: Mouse testis tissue lysate;  
Primary antibody: 210242(COX6B2 Antibody)  
at dilution 1/800;  
Secondary antibody: HRP-conjugated Goat  
anti rabbit IgG at 1/5000 dilution;  
Exposure time: 30 seconds