

## COX5B RABBIT MAB

**Cat.#:** N262060

**Product Name:** Anti-COX5B Rabbit Monoclonal Antibody

**Synonyms:** COX5B; Cytochrome c oxidase subunit 5B; mitochondrial; Cytochrome c oxidase polypeptide Vb

**UNIPROT ID:** P10606

**Background:** This protein is one of the nuclear-coded polypeptide chains of cytochrome c oxidase, the terminal oxidase in mitochondrial electron transport.

**Immunogen:** A synthetic peptide of human COX5B

**Applications:** WB,IHC-F,IHC-P,ICC/IF,IP

**Recommended Dilutions:** WB: 1/500-1/1000 IHC: 1/50-1/100 IF: 1/50-1/200 IP: 1/20

**Host Species:** Rabbit

**Clonality:** Rabbit Monoclonal

**Clone ID:** R01-911

**MW:** Calculated MW: 14 kDa; Observed MW: 14 kDa

**Isotype:** IgG

**Purification:** Affinity Purified

**Species Reactivity:** Human,Mouse,Rat

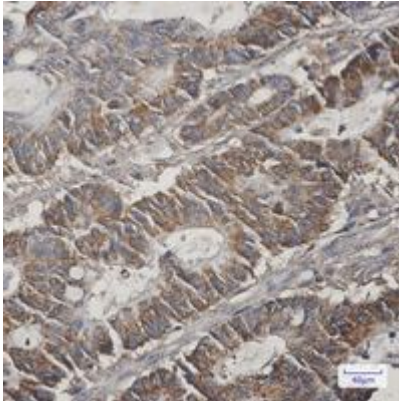
**Conjugation:** Unconjugated

**Modification:** Unmodified

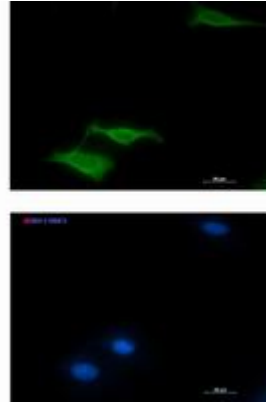
**Constituents:** PBS (without Mg<sup>2+</sup> and Ca<sup>2+</sup>), pH 7.3 containing 50% glycerol, 0.5% BSA and 0.02% sodium azide

**Research Areas:** Tags & Cell Markers

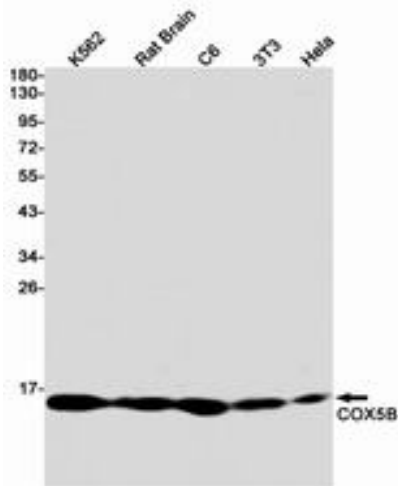
**Storage & Shipping:** Store at -20°C. Avoid repeated freezing and thawing



Immunohistochemistry analysis of paraffin-embedded Human colon cancer tissue using COX5B antibody. High-pressure and temperature Sodium Citrate pH 6.0 was used for antigen retrieval.



Immunocytochemistry analysis of COX5B (green) in LNcap using COX5B antibody, and DAPI (blue).



Western blot analysis of COX5B in K562, rat Brain, C6, 3T3, Hela lysates using COX5B antibody.