

## COX16 RABBIT PAB

**Cat.#:** S216276

**Product Name:** Anti-COX16 Rabbit Polyclonal Antibody

**Synonyms:** hCOX16; HSPC203; C14orf112

**UNIPROT ID:** Q9P0S2 (Gene Accession - BC001702 )

**Background:** Required for the assembly of the mitochondrial respiratory chain complex IV (CIV), also known as cytochrome c oxidase (PubMed:29355485, PubMed:29381136). Promotes the insertion of copper into the active site of cytochrome c oxidase subunit II (MT-CO2/COX2) (PubMed:29355485, PubMed:29381136). Interacts specifically with newly synthesized MT-CO2/COX and its copper center-forming metallochaperones SCO1, SCO2 and COA6 (PubMed:29381136). Probably facilitates MT-CO2/COX2 association with the MITRAC assembly intermediate containing MT-CO1/COX1, thereby participating in merging the MT-CO1/COX1 and MT-CO2/COX2 assembly lines (PubMed:29381136).

**Immunogen:** Fusion protein of human COX16

**Applications:** ELISA, IHC

**Recommended Dilutions:** IHC: 25-100; ELISA: 500-2000

**Host Species:** Rabbit

**Clonality:** Rabbit Polyclonal

**Isotype:** Immunogen-specific rabbit IgG

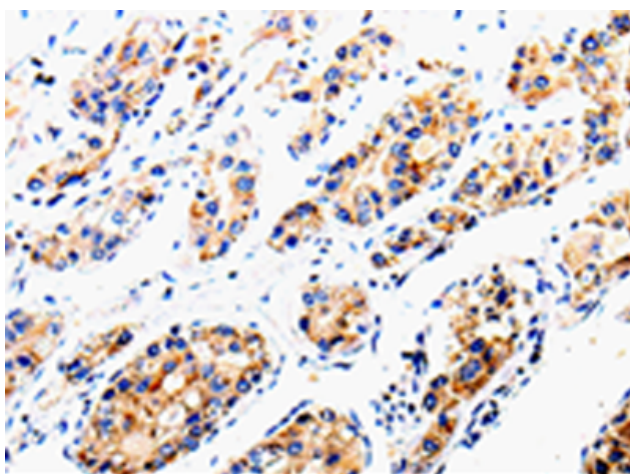
**Purification:** Antigen affinity purification

**Species Reactivity:** Human, Mouse

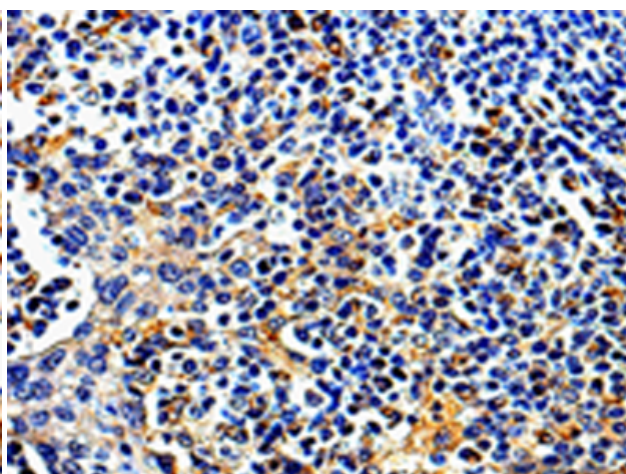
**Constituents:** PBS (without Mg<sup>2+</sup> and Ca<sup>2+</sup>), pH 7.4, 150 mM NaCl, 0.05% Sodium Azide and 40% glycerol

**Research Areas:** Metabolism

**Storage & Shipping:** Store at -20°C. Avoid repeated freezing and thawing



Immunohistochemistry analysis of paraffin-embedded Human liver cancer tissue using 216276(COX16 Antibody) at a dilution of 1/50(Cytoplasm, Cell membrane).



Immunohistochemistry analysis of paraffin-embedded Human tonsil tissue using 216276(Anti-COX16 Antibody) at a dilution of 1/50.