

CORTACTIN RABBIT MAB

Cat.#: N262055

Product Name: Anti-Cortactin Rabbit Monoclonal Antibody

Synonyms: CTTN; EMS1; Src substrate cortactin; Amplaxin; Oncogene EMS1

UNIPROT ID: Q14247

Background: Cortactin a cytoskeletal protein that that is involved in coordinating actin reorganization during cell movement. Localizes at the leading edge of lamellipodia during cell migration. Its amino-terminal acidic domain associates with the Arp2/3 and WASP complex at F-actin branches.

Immunogen: A synthetic peptide of human Cortactin

Applications: WB,IHC-F,IHC-P,ICC/IF,IP

Recommended Dilutions: WB: 1/500-1/1000 IHC: 1/50-1/100 IF: 1/50-1/200 IP: 1/20

Host Species: Rabbit

Clonality: Rabbit Monoclonal

Clone ID: R07-2C5

MW: Calculated MW: 62 kDa; Observed MW: 80-85 kDa

Isotype: IgG

Purification: Affinity Purified

Species Reactivity: Human,Mouse,Rat

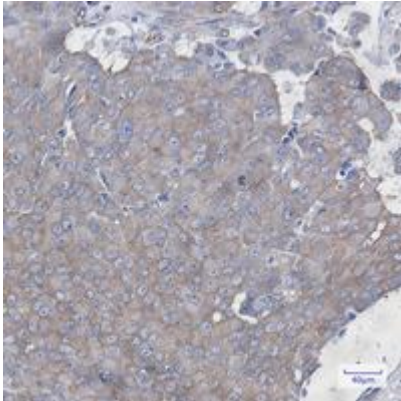
Conjugation: Unconjugated

Modification: Unmodified

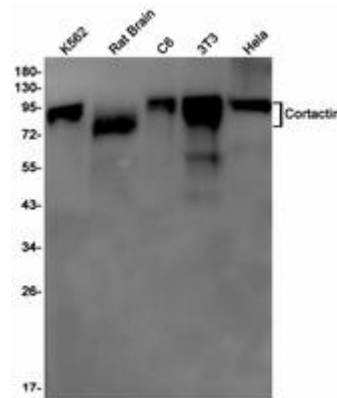
Constituents: PBS (without Mg²⁺ and Ca²⁺), pH 7.3 containing 50% glycerol, 0.5% BSA and 0.02% sodium azide

Research Areas: Signal Transduction

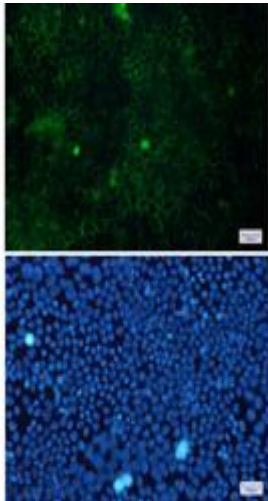
Storage & Shipping: Store at -20°C. Avoid repeated freezing and thawing



Immunohistochemistry analysis of paraffin-embedded Human breast cancer using Cortactin antibody. High-pressure and temperature Sodium Citrate pH 6.0 was used for antigen retrieval.



Western blot analysis of Cortactin in K562, rat Brain, C6, 3T3, HeLa lysates using Cortactin antibody.



Immunocytochemistry analysis of Cortactin (green) in HeLa using Cortactin antibody, and DAPI (blue)