

CORO1C RABBIT PAB

Cat.#: S217300

Product Name: Anti-CORO1C Rabbit Polyclonal Antibody

Synonyms: HCRNN4

UNIPROT ID: Q9ULV4 (Gene Accession - BC002342)

Background: This gene encodes a member of the WD repeat protein family. WD repeats are minimally conserved regions of approximately 40 amino acids typically bracketed by gly-his and trp-asp (GH-WD), which may facilitate formation of heterotrimeric or multiprotein complexes. Members of this family are involved in a variety of cellular processes, including cell cycle progression, signal transduction, apoptosis, and gene regulation. Three transcript variants encoding two different isoforms have been found for this gene.

Immunogen: Fusion protein of human CORO1C

Applications: ELISA, WB, IHC

Recommended Dilutions: IHC: 50-200;WB: 500-2000;ELISA: 2000-5000

Host Species: Rabbit

Clonality: Rabbit Polyclonal

Isotype: Immunogen-specific rabbit IgG

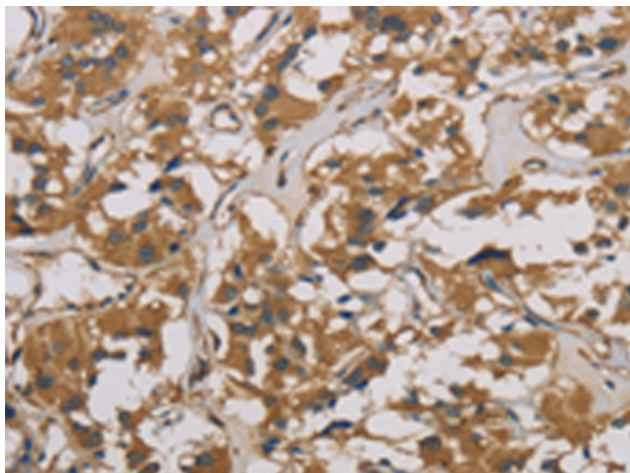
Purification: Antigen affinity purification

Species Reactivity: Human, Mouse

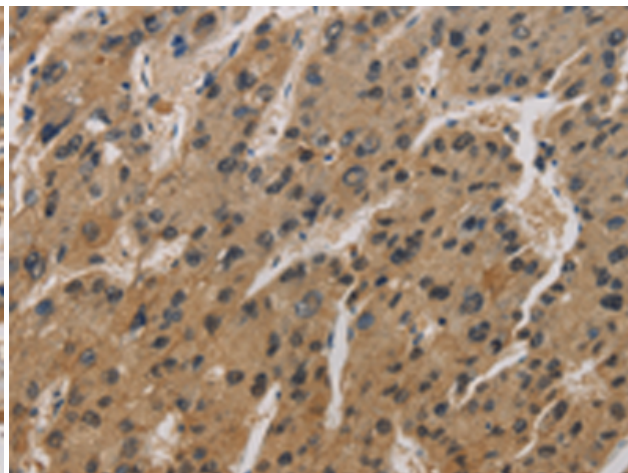
Constituents: PBS (without Mg²⁺ and Ca²⁺), pH 7.4, 150 mM NaCl, 0.05% Sodium Azide and 40% glycerol

Research Areas: Signal Transduction, Cancer

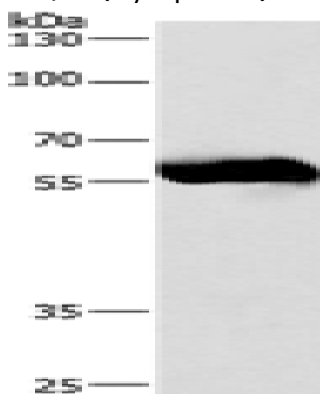
Storage & Shipping: Store at -20°C. Avoid repeated freezing and thawing



Immunohistochemistry analysis of paraffin-embedded Human thyroid cancer tissue using 217300(CORO1C Antibody) at a dilution of 1/50(Cytoplasm).



Immunohistochemistry analysis of paraffin-embedded Human liver cancer tissue using 217300(Anti-CORO1C Antibody) at a dilution of 1/50.



Gel: 8%SDS-PAGE, Lysate: 40 μ g;
Lane: Lovo cells;
Primary antibody: 217300(CORO1C Antibody)
at dilution 1/530;
Secondary antibody: Goat anti rabbit IgG at
1/8000 dilution;
Exposure time: 40 seconds