

## COPS5 RABBIT PAB

**Cat.#:** S210411

**Product Name:** Anti-COPS5 Rabbit Polyclonal Antibody

**Synonyms:** CSN5, JAB1, SGN5, MOV-34

**UNIPROT ID:** Q92905 (Gene Accession - BC001187 )

**Background:** The protein encoded by this gene is one of the eight subunits of COP9 signalosome, a highly conserved protein complex that functions as an important regulator in multiple signaling pathways. The structure and function of COP9 signalosome is similar to that of the 19S regulatory particle of 26S proteasome. COP9 signalosome has been shown to interact with SCF-type E3 ubiquitin ligases and act as a positive regulator of E3 ubiquitin ligases. This protein is reported to be involved in the degradation of cyclin-dependent kinase inhibitor CDKN1B/p27Kip1. It is also known to be an coactivator that increases the specificity of JUN/AP1 transcription factors

**Immunogen:** Fusion protein of human COPS5

**Applications:** ELISA, WB, IHC

**Recommended Dilutions:** IHC: 150-500;WB: 1000-5000;ELISA: 2000-10000

**Host Species:** Rabbit

**Clonality:** Rabbit Polyclonal

**Isotype:** Immunogen-specific rabbit IgG

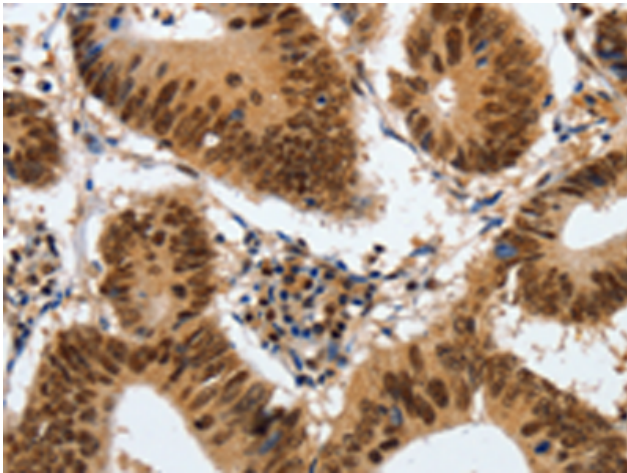
**Purification:** Antigen affinity purification

**Species Reactivity:** Human, Mouse

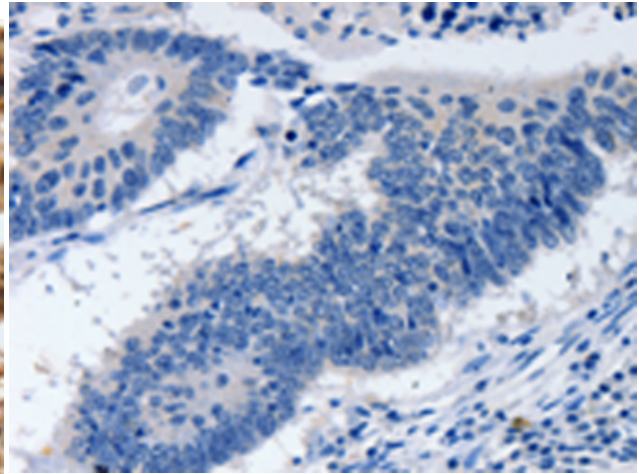
**Constituents:** PBS (without Mg<sup>2+</sup> and Ca<sup>2+</sup>), pH 7.4, 150 mM NaCl, 0.05% Sodium Azide and 40% glycerol

**Research Areas:** Epigenetics and Nuclear Signaling, Cancer, Cell Biology

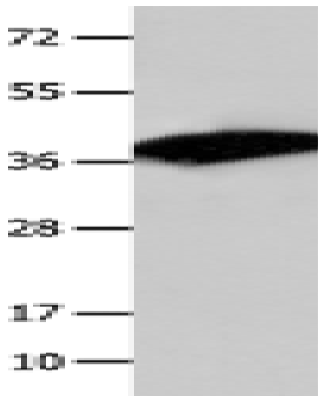
**Storage & Shipping:** Store at -20°C. Avoid repeated freezing and thawing



Immunohistochemistry analysis of paraffin embedded Human colon cancer tissue using 210411(COPS5 Antibody) at a dilution of 1/120(Cytoplasm, Nucleus).



In comparison with the IHC on the left, the same paraffin-embedded Human colon cancer tissue is first treated with the fusion protein and then with 210411(Anti-COPS5 Antibody) at dilution 1/120.



Gel: 12%SDS-PAGE, Lysate: 30 µg;  
Lane: Mouse liver tissue;  
Primary antibody: 210411(COPS5 Antibody) at dilution 1/1550;  
Secondary antibody: Goat anti rabbit IgG at 1/8000 dilution;  
Exposure time: 5 seconds