

CONNEXIN 43 RABBIT PAB

Cat.#: N225352

Product Name: Anti-Connexin 43 Rabbit pAb

Synonyms: Connexin 43; Connexin-43; Cx 43; Cx43; CXA1_HUMAN; DFNB38; Gap junction 43 kDa heart protein; Gap junction alpha-1 protein; Gap junction protein alpha 1 43kDa (connexin 43); Gap junction protein alpha 1 43kDa; Gap junction protein alpha like; GJA 1; Gjal; GJAL; ODD; ODDD; ODOD; SDTY3.

UNIPROT ID: P17302

Background: Gap junction protein that acts as a regulator of bladder capacity.

Immunogen: The antiserum was produced against synthesized peptide derived from human Connexin 43. AA range:333-382

Applications: WB,IHC-F,IHC-P,ICC/IF,ELISA

Recommended Dilutions: WB: 1/500-1/1000 IHC: 1/50-1/100 IF: 1/50-1/200 ELISA: 1/10000

Host Species: Rabbit

Clonality: Rabbit Polyclonal

Clone ID: -

MW: Calculated MW: 43 kDa; Observed MW: 43 kDa

Isotype: IgG

Purification: Affinity Purified

Species Reactivity: Human,Mouse,Rat

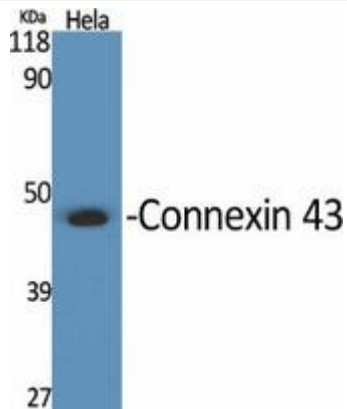
Conjugation: Unconjugated

Modification: Unmodified

Constituents: PBS (without Mg²⁺ and Ca²⁺), pH 7.3 containing 50% glycerol, 0.5% BSA and 0.02% sodium azide

Research Areas: Signal Transduction

Storage & Shipping: Store at -20°C. Avoid repeated freezing and thawing



Western blot analysis of Connexin 43 in various lysates using Connexin 43 antibody.