

## COMPLEX III SUBUNIT 5 RABBIT MAB

**Cat.#:** N262837

**Product Name:** Anti-Complex III Subunit 5 Rabbit Monoclonal Antibody

**Synonyms:** petC; PGR1; RPI1; RIS1; RISP; UQCR5; UQCRFS1

**UNIPROT ID:** P47985

**Background:** Component of the ubiquinol-cytochrome c reductase complex (complex III or cytochrome b-c1 complex), which is a respiratory chain that generates an electrochemical potential coupled to ATP synthesis.

**Immunogen:** A synthetic peptide of human RISP

**Applications:** WB,IHC-F,IHC-P,ICC/IF,IP

**Recommended Dilutions:** WB: 1/500-1/1000 IHC: 1/50-1/100 IF: 1/50-1/200 IP: 1/20

**Host Species:** Rabbit

**Clonality:** Rabbit Monoclonal

**Clone ID:** R06-513

**MW:** Calculated MW: 30 kDa; Observed MW: 24 kDa

**Isotype:** IgG

**Purification:** Affinity Purified

**Species Reactivity:** Human,Mouse,Rat

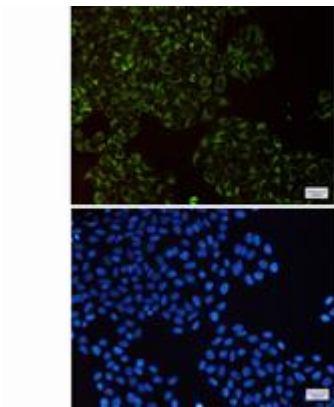
**Conjugation:** Unconjugated

**Modification:** Unmodified

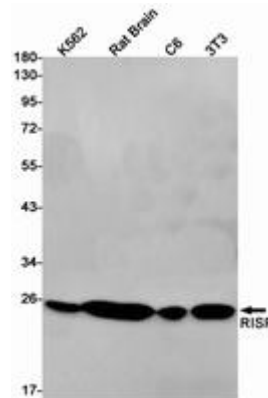
**Constituents:** PBS (without Mg<sup>2+</sup> and Ca<sup>2+</sup>), pH 7.3 containing 50% glycerol, 0.5% BSA and 0.02% sodium azide

**Research Areas:** Microbiology

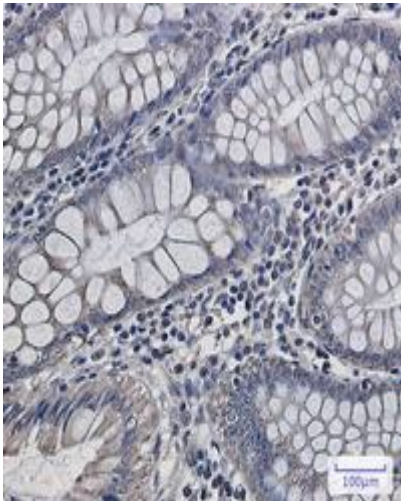
**Storage & Shipping:** Store at -20°C. Avoid repeated freezing and thawing



Immunocytochemistry analysis of RISP (green) in HeLa using RISP antibody, and DAPI (blue)



Western blot analysis of RISP in K562, rat Brain, C6, 3T3 lysates using Complex III Subunit 5 antibody.



Immunohistochemistry analysis of paraffin-embedded Human colon cancer using UQCRFS1/RISP antibody. High-pressure and temperature Sodium Citrate pH 6.0 was used for antigen retrieval.