

COMPLEX III SUBUNIT 5 RABBIT MAB

Cat.#: N262838

Product Name: Anti-Complex III Subunit 5 Rabbit Monoclonal Antibody

Synonyms: petC; PGR1; RPI1; RIS1; RISP; UQCR5; UQCRFS1

UNIPROT ID: P47985

Background: Component of the ubiquinol-cytochrome c reductase complex (complex III or cytochrome b-c1 complex), which is a respiratory chain that generates an electrochemical potential coupled to ATP synthesis.

Immunogen: A synthetic peptide of human RISP

Applications: WB,IHC-F,IHC-P,ICC/IF,IP

Recommended Dilutions: WB: 1/500-1/1000 IHC: 1/50-1/100 IF: 1/50-1/200 IP: 1/20

Host Species: Rabbit

Clonality: Rabbit Monoclonal

Clone ID: R04-6J8

MW: Calculated MW: 30 kDa; Observed MW: 24 kDa

Isotype: IgG

Purification: Affinity Purified

Species Reactivity: Human,Mouse,Rat

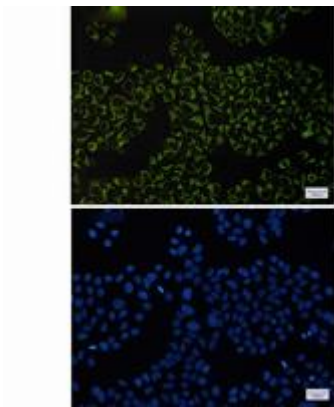
Conjugation: Unconjugated

Modification: Unmodified

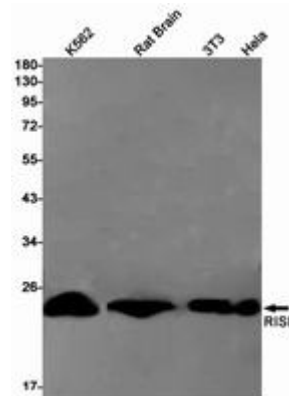
Constituents: PBS (without Mg²⁺ and Ca²⁺), pH 7.3 containing 50% glycerol, 0.5% BSA and 0.02% sodium azide

Research Areas: Microbiology

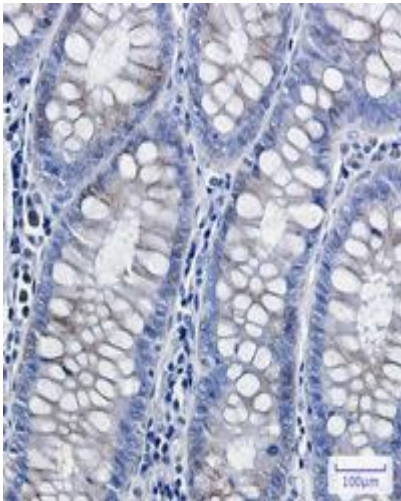
Storage & Shipping: Store at -20°C. Avoid repeated freezing and thawing



Immunocytochemistry analysis of RISP (green) in HeLa using RISP antibody, and DAPI (blue)



Western blot analysis of RISP in K562, rat Brain, 3T3, HeLa lysates using Complex III Subunit 5 antibody.



Immunohistochemistry analysis of paraffin-embedded Human colon cancer using UQCRFS1/RISP antibody. High-pressure and temperature Sodium Citrate pH 6.0 was used for antigen retrieval.