

COMMD1 RABBIT PAB

Cat.#: S218527

Product Name: Anti-COMMD1 Rabbit Polyclonal Antibody

Synonyms: MURR1; C2orf5

UNIPROT ID: Q8N668 (Gene Accession - BC022046)

Background: COMMD1 is a regulator of copper homeostasis, sodium uptake, and NF-kappa-B (see MIM 164011) signaling (de Bie et al., 2005 [PubMed 16267171]).

Immunogen: Fusion protein of human COMMD1

Applications: ELISA, WB, IHC

Recommended Dilutions: IHC: 25-100;WB: 200-1000;ELISA: 5000-10000

Host Species: Rabbit

Clonality: Rabbit Polyclonal

Isotype: Immunogen-specific rabbit IgG

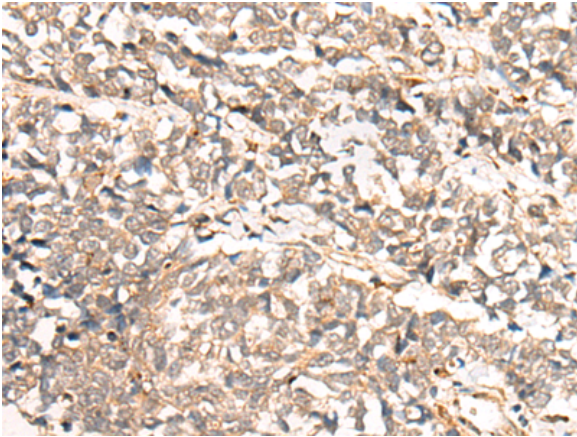
Purification: Antigen affinity purification

Species Reactivity: Human, Mouse

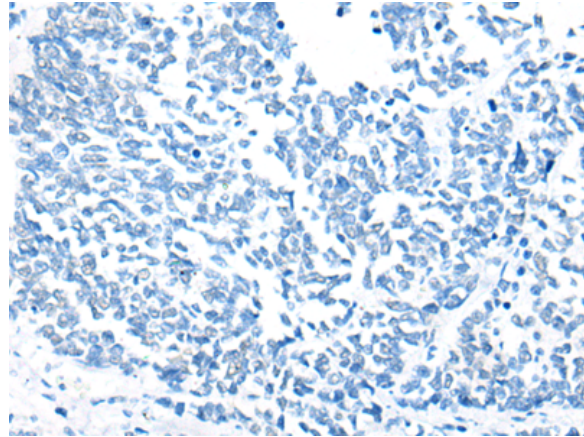
Constituents: PBS (without Mg²⁺ and Ca²⁺), pH 7.4, 150 mM NaCl, 0.05% Sodium Azide and 40% glycerol

Research Areas: Metabolism, Epigenetics and Nuclear Signaling

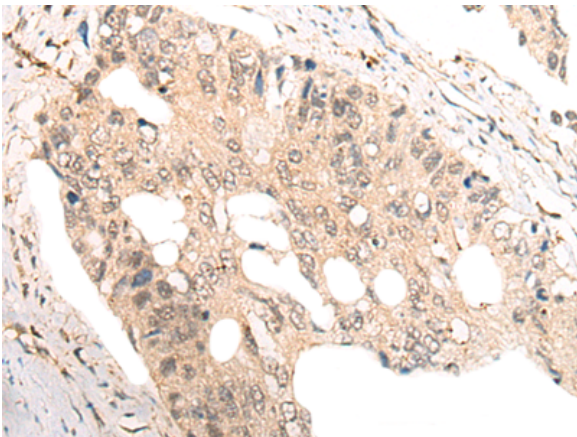
Storage & Shipping: Store at -20°C. Avoid repeated freezing and thawing



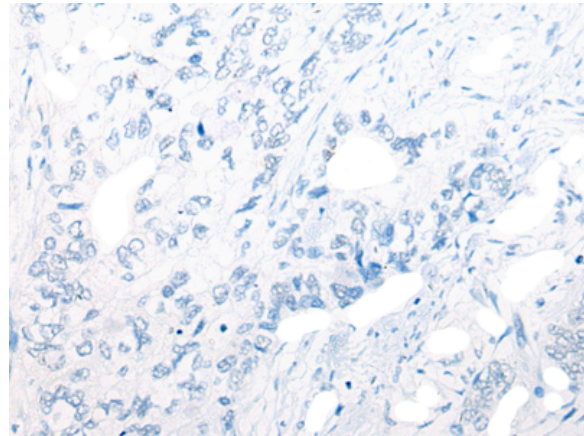
Immunohistochemistry analysis of paraffin embedded Human lung cancer tissue using 218527 (COMMD1 Antibody) at a dilution of 1/35 (Cytoplasm and Nucleus).



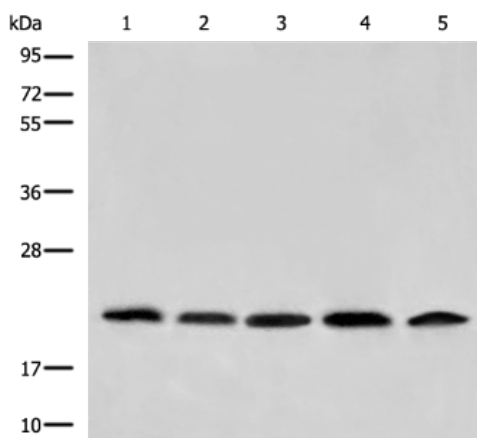
In comparison with the IHC on the left, the same paraffin-embedded Human lung cancer tissue is first treated with the fusion protein and then with 218527 (Anti-COMMD1 Antibody) at dilution 1/35.



The image on the left is immunohistochemistry of paraffin-embedded Human colorectal cancer tissue using 218527 (Anti-COMMD1 Antibody) at a dilution of 1/35.



In comparison with the IHC on the left, the same paraffin-embedded Human colorectal cancer tissue is first treated with fusion protein and then with D224622 (Anti-COMMD1 Antibody) at dilution 1/35.



Gel: 12% SDS-PAGE, Lysate: 40 μ g;
 Lane 1-5: HepG2, Hela, A549, Jurkat and 231 cell lysates;
 Primary antibody: 218527 (COMMD1 Antibody) at dilution 1/400;
 Secondary antibody: Goat anti rabbit IgG at 1/8000 dilution;
 Exposure time: 3 seconds



Product Description

Pioneering GTPase and Oncogene Product Development since 2010
