

COLLAGEN XIII ALPHA 1 RABBIT PAB

Cat.#: N225237

Product Name: Anti-Collagen XIII alpha 1 Rabbit pAb

Synonyms: Collagen alpha-1(XIII) chain (COLXIII A1)

UNIPROT ID: Q5TAT6

Background: Involved in cell-matrix and cell-cell adhesion interactions that are required for normal development.

Immunogen: Synthesized peptide derived from human COL13A1. at AA range: 41-90

Applications: WB,ELISA

Recommended Dilutions: WB: 1/500-1/1000 ELISA: 1/10000

Host Species: Rabbit

Clonality: Rabbit Polyclonal

Clone ID: -

MW: Calculated MW: 70 kDa; Observed MW: 70 kDa

Isotype: IgG

Purification: Affinity Purified

Species Reactivity: Human,Mouse

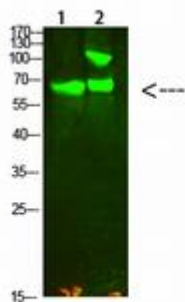
Conjugation: Unconjugated

Modification: Unmodified

Constituents: PBS (without Mg²⁺ and Ca²⁺), pH 7.3 containing 50% glycerol, 0.5% BSA and 0.02% sodium azide

Research Areas: Cell Biology

Storage & Shipping: Store at -20°C. Avoid repeated freezing and thawing



Western blot analysis of Collagen XIII alpha 1 in HeLa, mouse kidney lysates using Collagen XIII alpha 1 antibody.



Product Description

Pioneering GTPase and Oncogene Product Development since 2010
