

COLLAGEN XII ALPHA 1 RABBIT PAB

Cat.#: N225215

Product Name: Anti-Collagen XII alpha 1 Rabbit pAb

Synonyms: Collagen alpha-1(XII) chain

UNIPROT ID: Q99715

Background: Type XII collagen interacts with type I collagen-containing fibrils, the COL1 domain could be associated with the surface of the fibrils, and the COL2 and NC3 domains may be localized in the perifibrillar matrix.

Immunogen: Synthetic peptide from human protein at AA range: 1993-2064

Applications: IHC-P,ELISA

Recommended Dilutions: IHC: 1/50-1/100 ELISA: 1/10000

Host Species: Rabbit

Clonality: Rabbit Polyclonal

Clone ID: -

MW: -

Isotype: IgG

Purification: Affinity Purified

Species Reactivity: Human

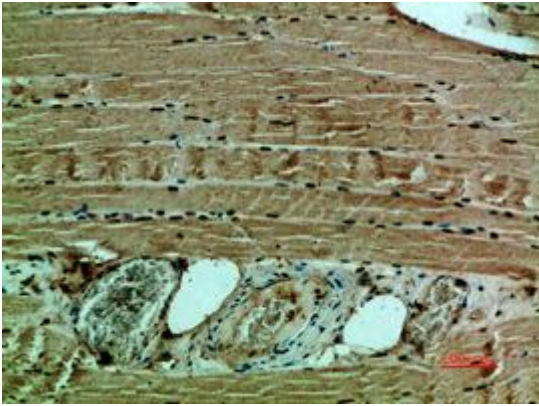
Conjugation: Unconjugated

Modification: Unmodified

Constituents: PBS (without Mg²⁺ and Ca²⁺), pH 7.3 containing 50% glycerol, 0.5% BSA and 0.02% sodium azide

Research Areas: Cell Biology

Storage & Shipping: Store at -20°C. Avoid repeated freezing and thawing



Immunohistochemistry analysis of paraffin-embedded Human muscle using Collagen XII alpha 1 antibody. High-pressure and temperature Sodium Citrate pH 6.0 was used for antigen retrieval.