

## COLLAGEN VIII ALPHA 2 RABBIT PAB

**Cat.#:** N225232

**Product Name:** Anti-Collagen VIII alpha 2 Rabbit pAb

**Synonyms:** Collagen alpha-2(VIII) chain (Endothelial collagen)

**UNIPROT ID:** P25067

**Background:** This gene encodes the alpha 2 chain of type VIII collagen. This protein is a major component of the basement membrane of the corneal endothelium and forms homo- or heterotrimers with alpha 1 (VIII) type collagens. Defects in this gene are associated with Fuchs endothelial corneal dystrophy and posterior polymorphous corneal dystrophy type 2. Alternative splicing results in multiple transcript variants.

**Immunogen:** Synthesized peptide derived from human COL8A2. at AA range: 611-660

**Applications:** WB,ELISA

**Recommended Dilutions:** WB: 1/500-1/1000 ELISA: 1/10000

**Host Species:** Rabbit

**Clonality:** Rabbit Polyclonal

**Clone ID:** -

**MW:** Calculated MW: 67 kDa; Observed MW: 80 kDa

**Isotype:** IgG

**Purification:** Affinity Purified

**Species Reactivity:** Human,Mouse,Rat

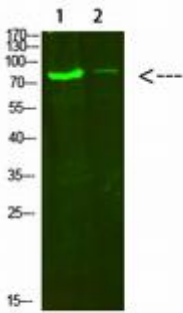
**Conjugation:** Unconjugated

**Modification:** Unmodified

**Constituents:** PBS (without Mg<sup>2+</sup> and Ca<sup>2+</sup>), pH 7.3 containing 50% glycerol, 0.5% BSA and 0.02% sodium azide

**Research Areas:** Cell Biology

**Storage & Shipping:** Store at -20°C. Avoid repeated freezing and thawing



Western blot analysis of Collagen VIII alpha 2 in HeLa, 3T3 lysates using Collagen VIII alpha 2 antibody.