

## COLLAGEN IV ALPHA 1 RABBIT PAB

**Cat.#:** N225208

**Product Name:** Anti-Collagen IV alpha 1 Rabbit pAb

**Synonyms:** Collagen alpha-1(IV) chain [Cleaved into: Arresten]

**UNIPROT ID:** P02462

**Background:** Type IV collagen is the major structural component of glomerular basement membranes (GBM), forming a 'chicken-wire' meshwork together with laminins, proteoglycans and entactin/nidogen.

**Immunogen:** Synthesized peptide derived from Collagen IV . at AA range: 1428-1443

**Applications:** WB,ELISA

**Recommended Dilutions:** WB: 1/500-1/1000 ELISA: 1/10000

**Host Species:** Rabbit

**Clonality:** Rabbit Polyclonal

**Clone ID:** -

**MW:** Calculated MW: 161 kDa; Observed MW: 130 kDa

**Isotype:** IgG

**Purification:** Affinity Purified

**Species Reactivity:** Human,Mouse,Rat

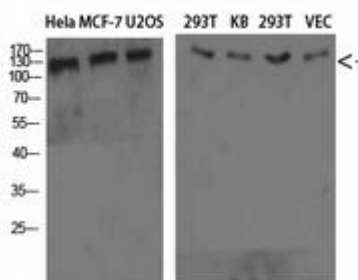
**Conjugation:** Unconjugated

**Modification:** Unmodified

**Constituents:** PBS (without Mg<sup>2+</sup> and Ca<sup>2+</sup>), pH 7.3 containing 50% glycerol, 0.5% BSA and 0.02% sodium azide

**Research Areas:** Signal Transduction

**Storage & Shipping:** Store at -20°C. Avoid repeated freezing and thawing



Western blot analysis of Collagen IV alpha 1 in Hela MCF-7 U2OS 293T KB 293T VEC lysates using Collagen IV alpha 1 antibody.



# Product Description

Pioneering GTPase and Oncogene Product Development since 2010

---