

## COLLAGEN IV ALPHA 1 (2G3) MOUSE MAB

**Cat.#:** N261362

**Product Name:** Anti-Collagen IV alpha 1 (2G3) Mouse Monoclonal Antibody

**Synonyms:** Collagen alpha-1(IV) chain [Cleaved into: Arresten]

**UNIPROT ID:** P02462

**Background:** Type IV collagen is the major structural component of glomerular basement membranes (GBM), forming a 'chicken-wire' meshwork together with laminins, proteoglycans and entactin/nidogen.

**Immunogen:** Synthetic peptide conjugated to KLH.

**Applications:** IHC-P

**Recommended Dilutions:** IHC: 1/50-1/100

**Host Species:** Mouse

**Clonality:** Mouse Monoclonal

**Clone ID:** 2G3-1H1-6E5

**MW:** -

**Isotype:** IgG1

**Purification:** Affinity Purified

**Species Reactivity:** Human,Rat,Mouse

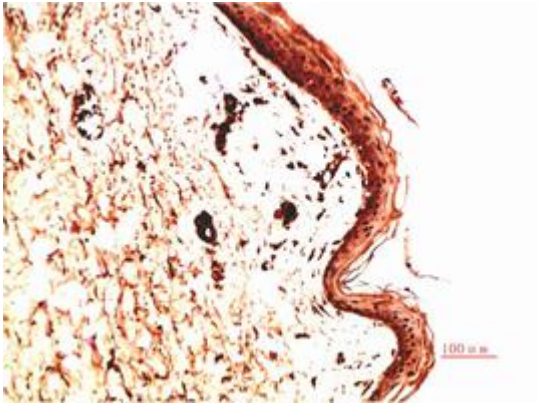
**Conjugation:** Unconjugated

**Modification:** Unmodified

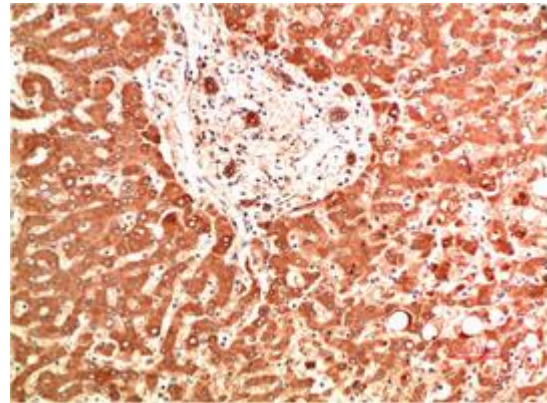
**Constituents:** PBS (without Mg<sup>2+</sup> and Ca<sup>2+</sup>), pH 7.3 containing 50% glycerol, 0.5% BSA and 0.02% sodium azide

**Research Areas:** Signal Transduction

**Storage & Shipping:** Store at -20°C. Avoid repeated freezing and thawing



Immunohistochemical analysis of paraffin-embedded Human tonsils using Collagen IV alpha 1 (2G3) antibody. High-pressure and temperature Sodium Citrate pH 6.0 was used for antigen retrieval.



Immunohistochemistry analysis of paraffin-embedded Human Liver Carcinoma Tissue using Collagen IV alpha 1 (2G3) antibody. High-pressure and temperature Sodium Citrate pH 6.0 was used for antigen retrieval.