

COL4A2 RABBIT PAB

Cat.#: S220467

Product Name: Anti-COL4A2 Rabbit Polyclonal Antibody

Synonyms: ICH; POREN2

UNIPROT ID: P08572 (Gene Accession - NP_001837)

Background: This gene encodes one of the six subunits of type IV collagen, the major structural component of basement membranes. The C-terminal portion of the protein, known as canstatin, is an inhibitor of angiogenesis and tumor growth. Like the other members of the type IV collagen gene family, this gene is organized in a head-to-head conformation with another type IV collagen gene so that each gene pair shares a common promoter.

Immunogen: Synthetic peptide of human COL4A2

Applications: ELISA, WB, IHC

Recommended Dilutions: IHC: 25-50;WB: 200-1000;ELISA: 5000-10000

Host Species: Rabbit

Clonality: Rabbit Polyclonal

Isotype: Immunogen-specific rabbit IgG

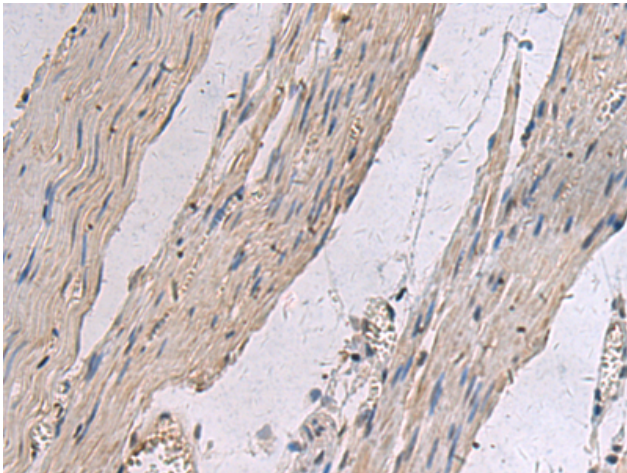
Purification: Antigen affinity purification

Species Reactivity: Human, Mouse

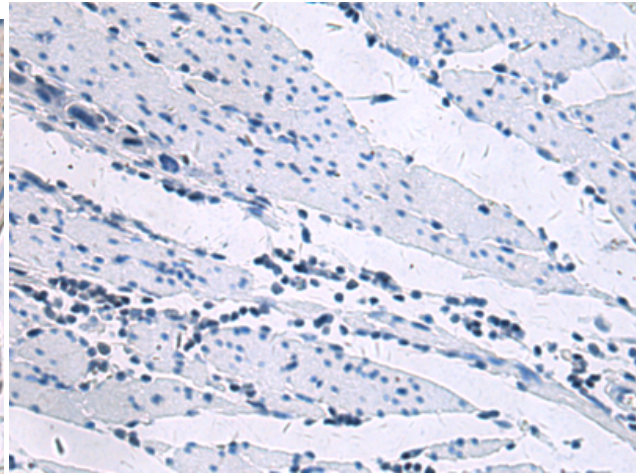
Constituents: PBS (without Mg²⁺ and Ca²⁺), pH 7.4, 150 mM NaCl, 0.05% Sodium Azide and 40% glycerol

Research Areas: Signal Transduction, Cardiovascular

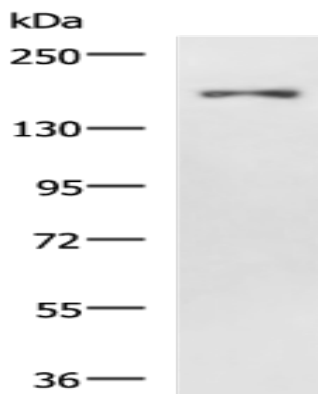
Storage & Shipping: Store at -20°C. Avoid repeated freezing and thawing



Immunohistochemistry analysis of paraffin embedded Human esophagus cancer tissue using 220467 (COL4A2 Antibody) at a dilution of 1/45 (Cytoplasm).



In comparison with the IHC on the left, the same paraffin-embedded Human esophagus cancer tissue is first treated with the synthetic peptide and then with 220467 (Anti-COL4A2 Antibody) at dilution 1/45.



Gel: 6%SDS-PAGE, Lysate: 40 μ g;
Lane: Hela cell lysate;
Primary antibody: 220467 (COL4A2 Antibody) at dilution 1/400;
Secondary antibody: HRP-conjugated Goat anti rabbit IgG at 1/5000 dilution;
Exposure time: 10 minutes