

## COG5 RABBIT PAB

**Cat.#:** S218524

**Product Name:** Anti-COG5 Rabbit Polyclonal Antibody

**Synonyms:** CDG2I; GTC90; GOLTC1

**UNIPROT ID:** Q9UP83 (Gene Accession - BC068540 )

**Background:** The protein encoded by this gene is one of eight proteins (Cog1-8) which form a Golgi-localized complex (COG) required for normal Golgi morphology and function. The encoded protein is organized with conserved oligomeric Golgi complex components 6, 7 and 8 into a sub-complex referred to as lobe B. Alternative splicing results in multiple transcript variants. Mutations in this gene result in congenital disorder of glycosylation type 2I.

**Immunogen:** Fusion protein of human COG5

**Applications:** ELISA, IHC

**Recommended Dilutions:** IHC: 20-100; ELISA: 5000-10000

**Host Species:** Rabbit

**Clonality:** Rabbit Polyclonal

**Isotype:** Immunogen-specific rabbit IgG

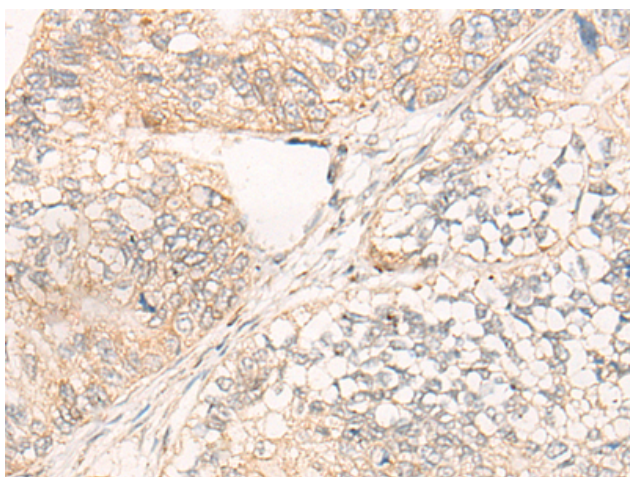
**Purification:** Antigen affinity purification

**Species Reactivity:** Human, Mouse

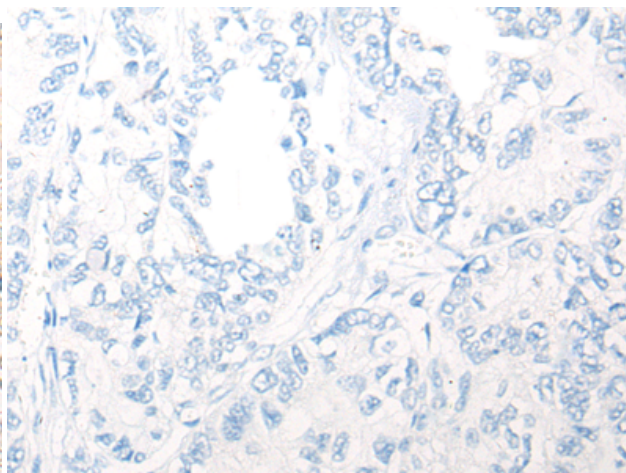
**Constituents:** PBS (without Mg<sup>2+</sup> and Ca<sup>2+</sup>), pH 7.4, 150 mM NaCl, 0.05% Sodium Azide and 40% glycerol

**Research Areas:** Signal Transduction

**Storage & Shipping:** Store at -20°C. Avoid repeated freezing and thawing



Immunohistochemistry analysis of paraffin embedded Human gastric cancer tissue using 218524(COG5 Antibody) at a dilution of 1/20(Cytoplasm).



In comparison with the IHC on the left, the same paraffin-embedded Human gastric cancer tissue is first treated with the fusion protein and then with 218524(Anti-COG5 Antibody) at dilution 1/20.