

COA7 RABBIT PAB

Cat.#: S218404

Product Name: Anti-COA7 Rabbit Polyclonal Antibody

Synonyms: RESA1; SELRC1; Clorf163

UNIPROT ID: Q96BR5 (Gene Accession - BC015313)

Background: The cytochrome c oxidase (COX) family of proteins function as the final electron donor in the respiratory chain to drive a proton gradient across the inner mitochondrial membrane, ultimately resulting in the production of water. COA7 (cytochrome c oxidase assembly factor 7), also known as RESA1, SELRC1 or Clorf163, is a 231 amino acid mitochondrial protein that belongs to the hcp beta-lactamase family. Consisting of five Sell-like repeats, COA7 may be associated with respiratory chain assembly. COA7 is encoded by a gene located on human chromosome 1p32.3. Chromosome 1 is the largest human chromosome spanning about 260 million base pairs and making up 8% of the human genome. There are about 3,000 genes on chromosome 1, and considering the great number of genes there are also a large number of diseases associated with chromosome 1. Notably, the rare aging disease Hutchinson–Gilford progeria is associated with the LMNA gene, which encodes lamin A. When defective, the LMNA gene product can build up in the nucleus and cause characteristic nuclear blebs. The mechanism of rapidly enhanced aging is unclear and is a topic of continuing exploration.

Immunogen: Full length fusion protein

Applications: ELISA, WB, IHC

Recommended Dilutions: IHC: 40–200;WB: 500–2000;ELISA: 5000–10000

Host Species: Rabbit

Clonality: Rabbit Polyclonal

Isotype: Immunogen-specific rabbit IgG

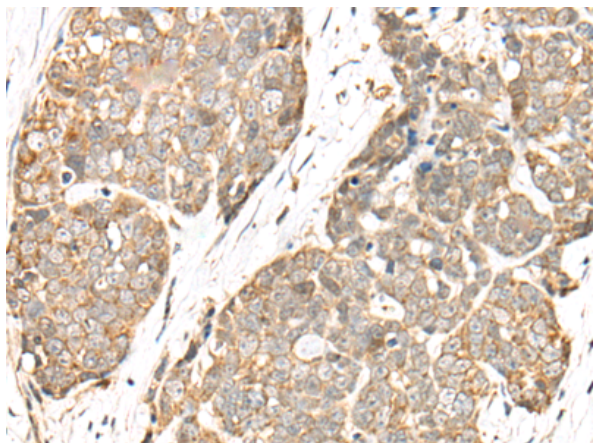
Purification: Antigen affinity purification

Species Reactivity: Human, Mouse

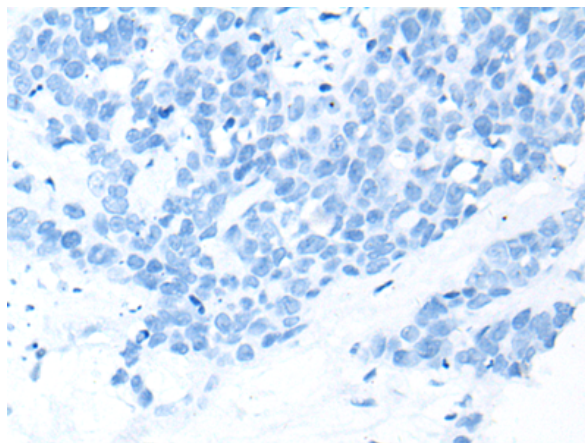
Constituents: PBS (without Mg²⁺ and Ca²⁺), pH 7.4, 150 mM NaCl, 0.05% Sodium Azide and 40% glycerol

Research Areas: Cell Biology

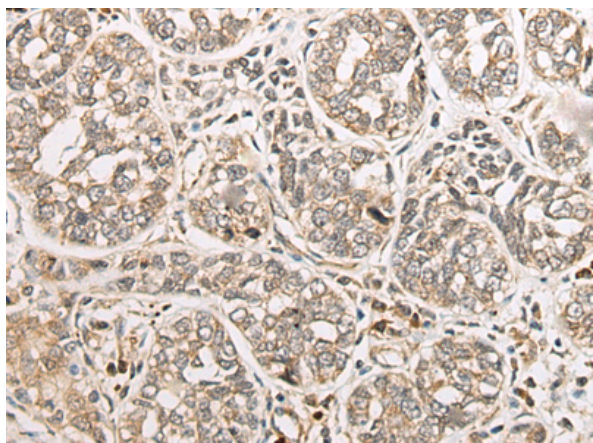
Storage & Shipping: Store at –20°C. Avoid repeated freezing and thawing



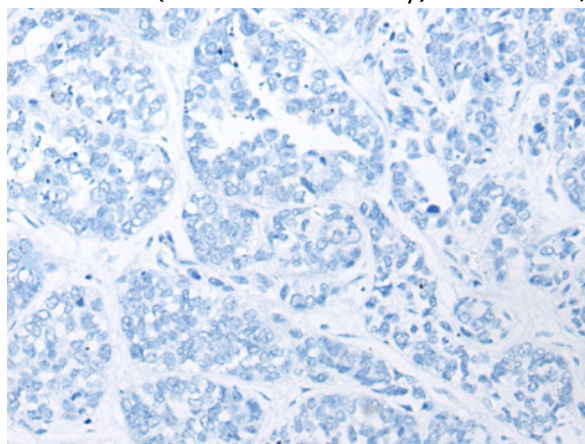
Immunohistochemistry analysis of paraffin embedded Human thyroid cancer tissue using 218404(COA7 Antibody) at a dilution of 1/55(Cytoplasm or Cell membrane).



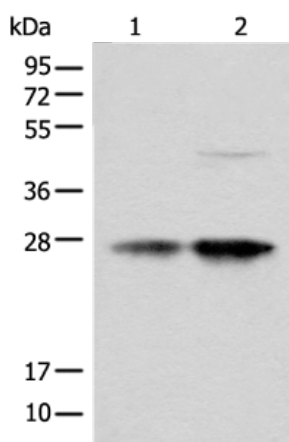
In comparison with the IHC on the left, the same paraffin-embedded Human thyroid cancer tissue is first treated with the fusion protein and then with 218404(Anti-COA7 Antibody) at dilution 1/55.



The image on the left is immunohistochemistry of paraffin-embedded Human esophagus cancer tissue using 218404(Anti-COA7 Antibody) at a dilution of 1/55.



In comparison with the IHC on the left, the same paraffin-embedded Human esophagus cancer tissue is first treated with fusion protein and then with D224337(Anti-COA7 Antibody) at dilution 1/55.



Gel: 12%SDS-PAGE, Lysate: 40 µg;
 Lane 1-2: HL-60 and HEPG2 cell lysates;
 Primary antibody: 218404(COA7 Antibody) at dilution 1/550;
 Secondary antibody: Goat anti rabbit IgG at 1/8000 dilution;
 Exposure time: 20 seconds



Product Description

Pioneering GTPase and Oncogene Product Development since 2010
