

CNOT6 RABBIT PAB

Cat.#: S221929

Product Name: Anti-CNOT6 Rabbit Polyclonal Antibody

Synonyms: CCR4; Ccr4a

UNIPROT ID: Q9ULM6 (Gene Accession - NP_001290170)

Background: This gene encodes the catalytic component of the CCR4-NOT core transcriptional regulation complex. The encoded protein has a 3'-5' RNase activity and prefers polyadenylated substrates. The CCR4-NOT complex plays a role in many cellular processes, including miRNA-mediated repression, mRNA degradation, and transcriptional regulation.

Immunogen: Synthetic peptide of human CNOT6

Applications: ELISA, IHC

Recommended Dilutions: IHC: 20-100; ELISA: 5000-10000

Host Species: Rabbit

Clonality: Rabbit Polyclonal

Isotype: Immunogen-specific rabbit IgG

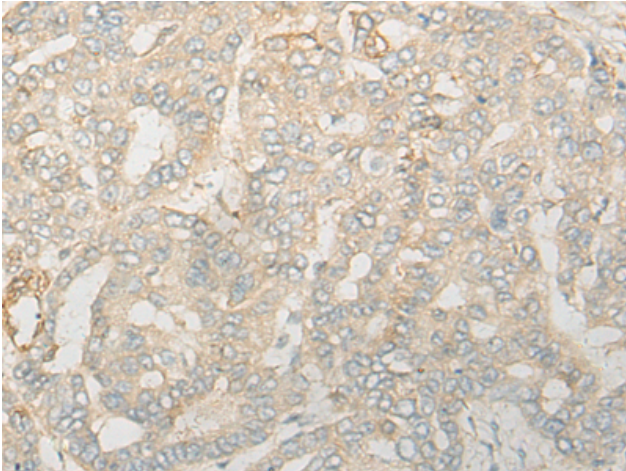
Purification: Antigen affinity purification

Species Reactivity: Human, Mouse, Rat

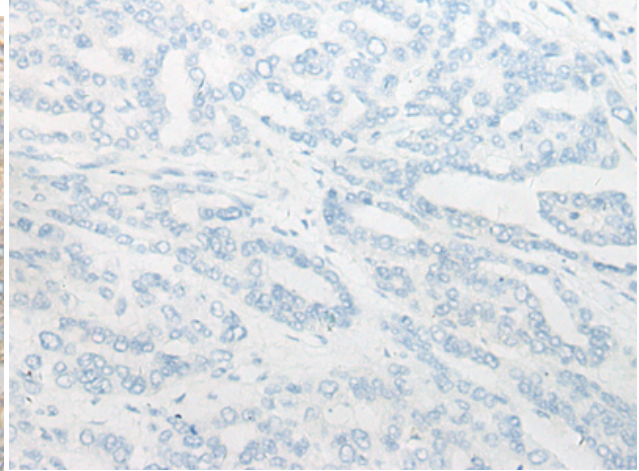
Constituents: PBS (without Mg²⁺ and Ca²⁺), pH 7.4, 150 mM NaCl, 0.05% Sodium Azide and 40% glycerol

Research Areas: Epigenetics and Nuclear Signaling

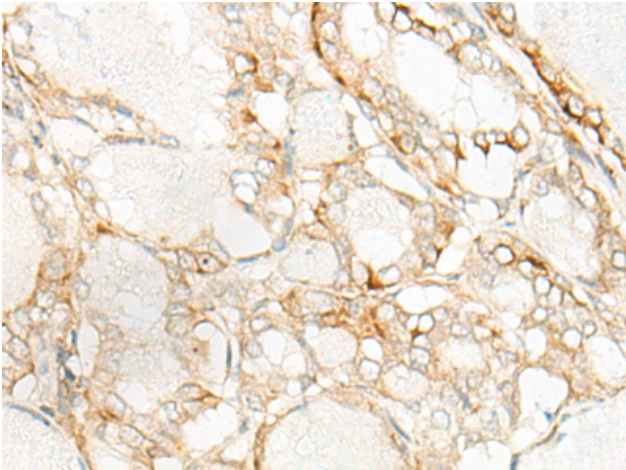
Storage & Shipping: Store at -20°C. Avoid repeated freezing and thawing



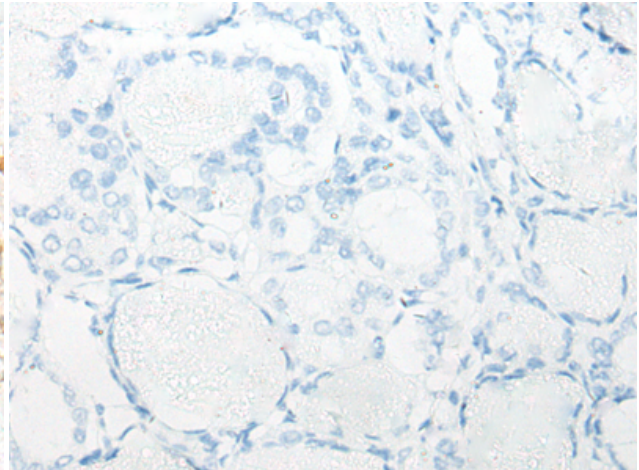
Immunohistochemistry analysis of paraffin embedded Human liver cancer tissue using 221929(CNOT6 Antibody) at a dilution of 1/20(Cytoplasm).



In comparison with the IHC on the left, the same paraffin-embedded Human liver cancer tissue is first treated with the synthetic peptide and then with 221929(Anti-CNOT6 Antibody) at dilution 1/20.



The image on the left is immunohistochemistry of paraffin-embedded Human thyroid cancer tissue using 221929(Anti-CNOT6 Antibody) at a dilution of 1/20.



In comparison with the IHC on the left, the same paraffin-embedded Human thyroid cancer tissue is first treated with synthetic peptide and then with D263756(Anti-CNOT6 Antibody) at dilution 1/20.