

CNGA1 RABBIT PAB

Cat.#: S219707

Product Name: Anti-CNGA1 Rabbit Polyclonal Antibody

Synonyms: CNCG, CNG1, RP49, CNCG1, CNG-1, RCNC1, RCNC α , RCNC α 1

UNIPROT ID: P29973 (Gene Accession - NP_000078)

Background: The protein encoded by this gene is involved in phototransduction. Along with another protein, the encoded protein forms a cGMP-gated cation channel in the plasma membrane, allowing depolarization of rod photoreceptors. This represents the last step in the phototransduction pathway. Defects in this gene are a cause of retinitis pigmentosa autosomal recessive (ARRP) disease. Two transcript variants encoding different isoforms have been found for this gene.

Immunogen: Synthetic peptide of human CNGA1

Applications: ELISA, IHC

Recommended Dilutions: IHC: 25-100; ELISA: 500-5000

Host Species: Rabbit

Clonality: Rabbit Polyclonal

Isotype: Immunogen-specific rabbit IgG

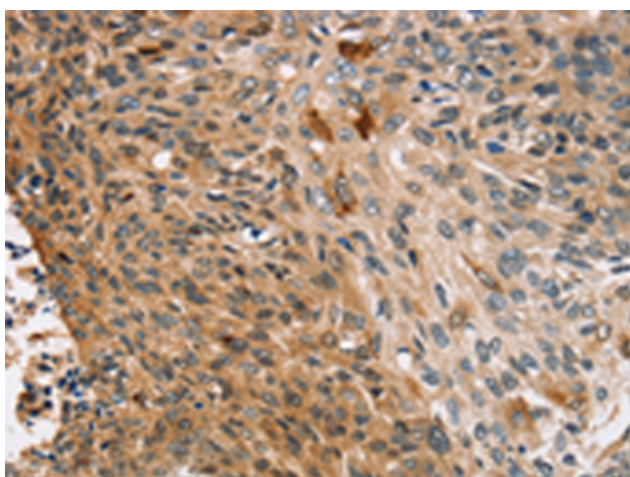
Purification: Antigen affinity purification

Species Reactivity: Human

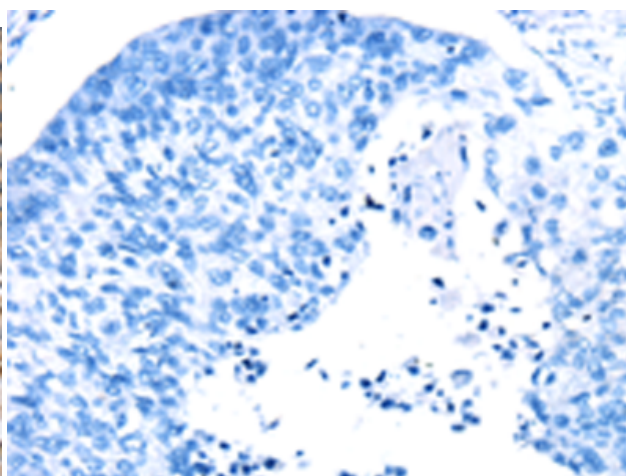
Constituents: PBS (without Mg²⁺ and Ca²⁺), pH 7.4, 150 mM NaCl, 0.05% Sodium Azide and 40% glycerol

Research Areas: Signal Transduction, Neuroscience

Storage & Shipping: Store at -20°C. Avoid repeated freezing and thawing



Immunohistochemistry analysis of paraffin embedded Human esophagus cancer tissue using 219707(CNGA1 Antibody) at a dilution of 1/25(Cytoplasm and Cell membrane).



In comparison with the IHC on the left, the same paraffin-embedded Human esophagus cancer tissue is first treated with the synthetic peptide and then with 219707(Anti-CNGA1 Antibody) at dilution 1/25.