

CNDP1 RABBIT PAB

Cat.#: S211056

Product Name: Anti-CNDP1 Rabbit Polyclonal Antibody

Synonyms: CNI; CPGL2; HsT2308

UNIPROT ID: Q96KN2 (Gene Accession - BC113512)

Background: This gene encodes a member of the M20 metalloprotease family. The encoded protein is specifically expressed in the brain, is a homodimeric dipeptidase which was identified as human carnosinase. This gene contains trinucleotide (CTG) repeat length polymorphism in the coding region.

Immunogen: Fusion protein of human CNDP1

Applications: ELISA, WB, IHC

Recommended Dilutions: IHC: 50-200;WB: 500-2000;ELISA: 2000-5000

Host Species: Rabbit

Clonality: Rabbit Polyclonal

Isotype: Immunogen-specific rabbit IgG

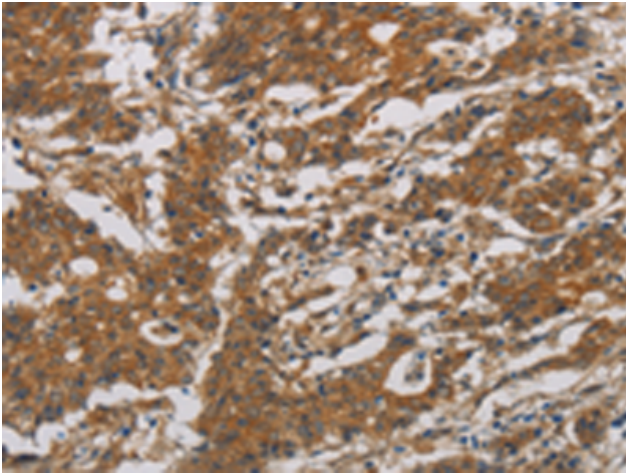
Purification: Antigen affinity purification

Species Reactivity: Human, Mouse, Rat

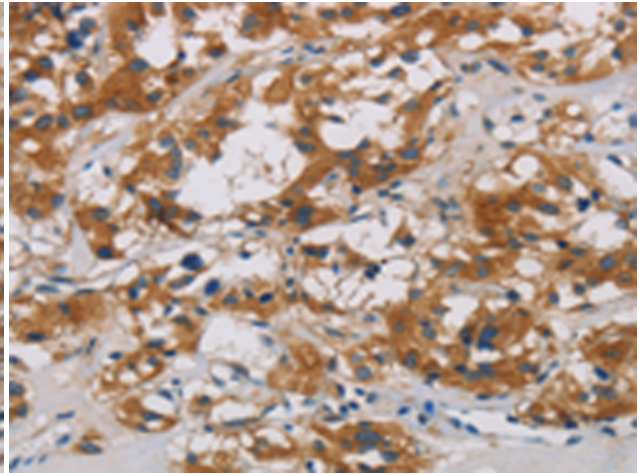
Constituents: PBS (without Mg²⁺ and Ca²⁺), pH 7.4, 150 mM NaCl, 0.05% Sodium Azide and 40% glycerol

Research Areas: Signal Transduction

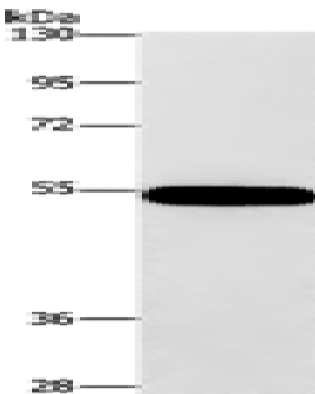
Storage & Shipping: Store at -20°C. Avoid repeated freezing and thawing



Immunohistochemistry analysis of paraffin-embedded Human gastric cancer tissue using 211056(CNDP1 Antibody) at a dilution of 1/30(Cytoplasm).



Immunohistochemistry analysis of paraffin-embedded Human thyroid cancer tissue using 211056(Anti-CNDP1 Antibody) at a dilution of 1/30.



Gel: 8%SDS-PAGE, Lysate: 40 µg;
Lane: 293T cells;
Primary antibody: 211056(CNDP1 Antibody) at dilution 1/320;
Secondary antibody: Goat anti rabbit IgG at 1/8000 dilution;
Exposure time: 10 seconds